

**Willard National Hatchery
Draft Fishing Plan**

February 2020

U.S. Fish and Wildlife Service

**Willard National Fish Hatchery
5501B Cook-Underwood Road
Cook, Washington 98605**

Submitted By:
Project Leader

Signature

Date

Concurrence:
Westside
Line
Supervisor

Signature

Date

Approved:
Assistant
Regional
Director-
Fish and
Aquatic
Conservation

Signature

Date

Table of Contents

I. Introduction.....3

II. Statement of Objectives.....4

III. Description of Fishing Program.....5

 A. Areas to be Opened to Fishing.....6

 B. Species to be Taken, Fishing Periods, Fishing Access.....7

 C. Fishing Permit Requirements.....7

 D. Consultation and Coordination with the State.....7

 E. Law Enforcement.....7

 F. Funding and Staffing Requirements7

IV. Conduct of the Fishing Program.....7

 A. Fishing Permit Application, Selection, and/or Registration
 Procedures.....8

 B. Hatchery-Specific Regulations8

 C. Relevant State Regulations8

 D. Other Hatchery Rules and Regulations for
 Fishing.....8

V. Public Engagement

 A. Outreach Plan for Announcing and Publicizing the Fishing
 Program.....8

 B. Anticipated Public Reaction to the Fishing Program8

 C. How the Public Will be Informed of Relevant Rules and
 Regulations8

VI. References.....9

WILLARD NATIONAL FISH HATCHERY DRAFT FISHING PLAN

I. Introduction

National Fish Hatcheries are guided by the goals and objectives of the Strategic Plan for the U.S. Fish and Wildlife Service Fish and Aquatic Conservation Program: FY2016-2020 (USFWS 2016), the mission and goals of the National Fish Hatchery (NFH) System, the authorized purposes of an individual hatchery, U.S. Fish and Wildlife Service (Service) policy, laws and international treaties.

The Hatchery is located on the Little White Salmon River 12 miles East and 5.5 miles North of Stevenson, Washington on Cook-Underwood Road.

The facility was established in 1952 under the authorization of the Mitchell Act (16 USC 755-757; 52 Stat. 345) for mitigation of Bonneville Dam on Pacific salmon. Construction of the Willard NFH began in 1951, located above an impassable natural waterfall, migrating adult salmon were unable to reach the Willard facility. Adult fish were collected and spawned at Little White Salmon and eggs shipped to Willard to initiate fish production. Co-located with the former Western Fish Nutrition Laboratory, this fish culture station was responsible for making significant early advances in fish nutrition. The laboratory building is now occupied by the U.S. Geological Survey (USGS) Columbia River Research Laboratory, a substation of the Western Fisheries Research Center, Seattle, WA.

Willard NFH is located on the Little White Salmon River approximately 5 miles upstream from Drano Lake and the Little White National Fish Hatchery (NFH), just off the Columbia River. The Willard hatchery includes 80.10 acres of land purchased by the Service, and an additional 3.70 acres acquired by agreement, easement, or lease. In addition, nine government residences are located adjacent to the hatchery on Coho Loop.

While habitat loss occurred throughout the Columbia River Basin as a result of Federal water resource development, the loss of spawning habitat on the Little White Salmon River is notable. As a result, the purpose of the hatcheries fish production program is to mitigate for fish losses in the Columbia River caused from Federal hydropower projects and other Federal water resource development.

National Fish Hatchery lands are maintained for the fundamental purpose of propagating and distributing fish and other aquatic animal life and managed for the protection of all species of wildlife (50 CFR Ch.1 70.1).

Willard NFH has provided fishing opportunities to the public since its establishment in 1952 and long before current environmental policies and regulations were promulgated. This document

serves to retroactively and officially open designated portions of Willard NFH lands to public fishing via the Code of Federal Regulations. These actions will ensure that all legal and policy obligations are met.

Recreational fishing is a popular sport on Little White Salmon River. Anglers fish from the banks of the Little White Salmon River, especially on the upper accessible stretches along the Oklahoma Road, where it is stocked with rainbow trout by the Washington Department of Fish and Wildlife (WDFW). The fish stocked in that area often drift downstream and into pools adjacent to Service-owned lands. There are several pullouts at the Cook-Underwood Bridge over the Little White Salmon River that provide parking opportunities. These parking areas also service kayakers that utilize the Little White Salmon River mainly during the period from late winter through late spring as water flows permit.

The Washington Department of Fish and Wildlife (WDFW) is the state's principal steward of fish and wildlife resources. State law directs the Department to conserve native fish and wildlife and their habitat, while also supporting sustainable fishing, hunting and other outdoor opportunities for millions of Washington residents and visitors. In 2017, WDFW completed its 2017-2019 Strategic Plan (WDFW 2017). The Service's authorization of fishing at the Willard NFH is in compliance and consistent with WDFW's strategic plan. For fish species such as Pacific Salmon and White Sturgeon, WDFW works closely with state and Federal agencies to set regulations that protect native species and allow for equitable harvest opportunities. The Department is committed to providing sustainable fishing opportunities throughout the state. Popular outdoor activities like fishing are a "quality of life" issue for millions of Washingtonians, and generate billions of dollars in economic benefits for local businesses and communities each year. Their plan is designed to maintain and increase those benefits with strategies that range from better access to better catch accounting.

II. Statement of Objectives

The objective of this plan is to ensure that the federally-owned lands within the Willard NFH are made available to the public for fishing opportunities. This plan will take into account operational requirements that restrict access to certain areas of the property and the fact that not all of the property lends itself to fishing opportunities. The main contribution to fishing access provided by the hatchery is through Service-owned lands downstream of the Cook-Underwood Bridge. The Service owns approximately 10.5 acres of forested accessible land on the Southeast side of Cook-Underwood Road. This land provides access to approximately 600 feet of shoreline on the North west bank of the Little White Salmon River starting approximately 1,400 feet downriver of the Cook-Underwood Bridge. (Figure 1). Access to the river upstream of the Cook-Underwood Bridge across Service-owned land is restricted due to infrastructure, safety, and operational needs.

Fishing Plan Goals

Goal 1: *Fishing, wildlife viewing, and other outdoor activities are enhanced and expanded.* The

Service strives to complement WDFW's goals which seek to preserve, protect and perpetuate fish and ecosystems while providing sustainable recreational and commercial fishing opportunities. These latter opportunities are enhanced via increased and improved access.

Goal 2: *Increase angling participation.* Diverse, stable and productive angling opportunities are the basis for increased angling participation. The Service strives to follow WDFW's objective of providing hatcheries and other public access sites that are safe, clean, and effectively support people's use and enjoyment of natural resources.

Fishing Plan Objective

The objective of a fishing program at Willard NFH is to provide opportunities for visitors to fish from hatchery lands in accordance with the Service's Fish and Aquatic Conservation Program Strategic Goals, WDFW Strategic Plan Goals, and WDFW fishing regulations.

The program will:

- Include clear and concise regulations that are readily available to visitors on the Hatchery website;
- Pose minimal conflict with overall fish and habitat objectives;
- Pose minimal conflict with other priority public use activities; and
- Provide a quality fishing program that provides opportunities for visitors to fish on hatchery lands.

Fishing Plan Strategies:

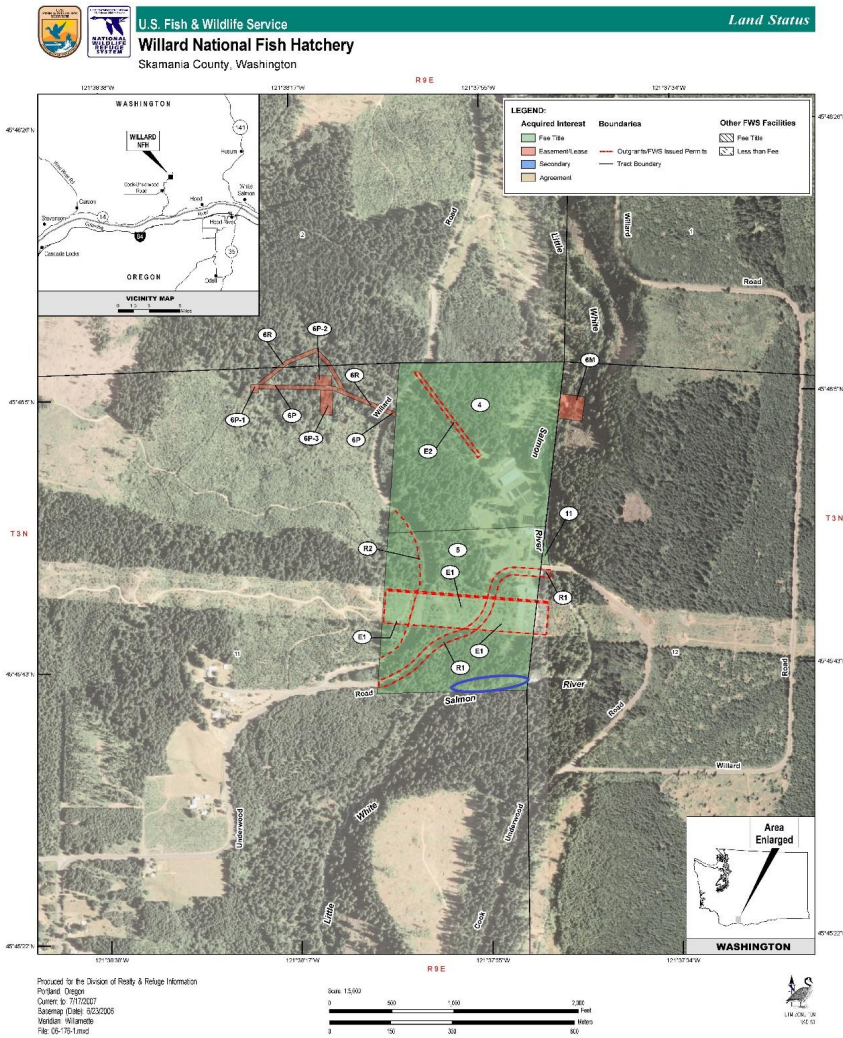
- a. To allow anglers access to about 600 feet of bank fishing along the West bank of the Little White Salmon River approximately 1,400 feet downstream of the Cook-Underwood Bridge.

III. Description of Fishing Program

A. Areas to be Opened to Fishing

Bank fishing access will be allowed through and on Service property southeast of the Cook-Underwood Road which includes approximately 600 feet of shoreline on the Northwest bank of the Little White Salmon River (Figure 1).

Figure 1.



Commented [1]: Plan area is the blue circle at the bottom of the Hatchery property. Discuss options/suggestions for better map to be included

Commented [2]: I'll check with GIS folks about getting a better map

B. Species to be Taken, Fishing Periods, Fishing Access

Anglers are required to comply with species and take limits within WDFW fishing regulations. The areas will be open for anglers to access year-round.

C. Fishing Permit Requirements

Anglers who are eligible to fish under Washington State law are eligible to fish on hatchery units. They must obtain a Washington State fishing license and follow Washington State laws, limits, and regulations.

D. Consultation and Coordination with the State

Consultation and coordination of this Fishing Plan was initiated with the WDFW and the Yakama Nation on December 19, 2019.

E. Law Enforcement

Enforcement of hatchery regulations normally associated with management of National Fish Hatchery System properties is the responsibility of commissioned Federal Wildlife Officers. Other officers, Special Agents, state game wardens, and the local Sheriff's Department may assist Federal Wildlife Officers.

The following methods are used to control and enforce fishing regulations:

- Hatchery and fishing area boundaries will be clearly posted;
- The hatchery will provide a brochure that shows fishing areas; and
- Federal law enforcement staff will randomly check anglers for compliance with Federal and state laws.

The hatchery will post fishing regulations on the hatchery website, hatchery information kiosks, and in hatchery offices.

F. Funding and Staffing Requirements

There will be little costs associated with the development of infrastructure to support fishing opportunities at the Willard NFH.

IV. Conduct of the Fishing Program

A. Fishing Permit Application, Selection, and/or Registration Procedures

No special application or registration process is required. Anglers must possess a current State of Washington fishing license.

B. Hatchery-Specific Fishing Regulations

Listed below are Hatchery-specific regulations that pertain to fishing on Willard NFH as of the date of this plan. These regulations may be modified as conditions change or if hatchery lands expand.

Sport Fishing. We allow fishing on designated areas of the hatchery in accordance with state regulation. The hatchery facilities upstream and on the North side of Cook-Underwood Road are closed from 4p.m. – 7:30 a.m. Fishing at night is currently permitted, but this could change in the future.

C. Relevant State Regulations

Refer to WDFW's "Sport Fishing Rules" for specific fishing regulations, as these may change often.

D. Other Hatchery Rules and Regulations for Fishing

- Camping, overnight use, and fires are prohibited.
- Fishing on hatchery lands as described within is allowed seven days per week
- Pets are welcome, but must be on a leash at all times.

V. Public Engagement

A. Outreach for Announcing and Publicizing the Fishing Program

The Hatchery maintains a mailing list, for news release purposes, to local newspapers, radio, and websites. Special announcements and articles may be released in conjunction with fishing seasons. In addition, information about fishing will be available at Willard NFH

B. Anticipated Public Reaction to the Fishing Program

No public reaction would be anticipated to opening up fishing access. Fishing access has been available to the public for many years, though not advertised, and no significant changes are planned.

C. How Anglers Will Be Informed of Relevant Rules and Regulations

General information regarding fishing can be obtained at the Willard NFH, 5501-B Cook-Underwood Rd, Cook WA 98605. The 2020 Washington State Sport fishing Regulations can be found at <https://wdfw.wa.gov/fishing/regulations>.

VI. References

USFWS (U.S. Fish and Wildlife Service). 2016. Strategic Plan for the U.S. Fish and Wildlife Service Fish and Aquatic Conservation Program: FY2016-2020. Falls Church, VA.

WDFW (Washington Department of Fish and Wildlife). 2017. 2017-19 Strategic Plan. Olympia, WA.