

AIRBUS
CUSTOMER SERVICES DIRECTORATE
1 Rond Point Maurice Bellonte
31707 BLAGNAC CEDEX
FRANCE
Tel : (33) 5 61 93 33 33
Telex : AIRBU 530526F
Fax : (33) 5 61 93 42 51

MANDATORY MANDATORY MANDATORY

ATA SYSTEM: 53

TITLE: FUSELAGE - CENTER FUSELAGE - REINFORCE UPPER FRAME FEET FITTINGS.

MODIFICATION No.: 12168S21823 12977S22524

This page transmits Revision No.04 of Service Bulletin No.A300-53-6125

ADDITIONAL WORK

****CONF ALL**

No additional work is required by this revision for aircraft modified by any previous issue.

REASON

Revision No. 04 issued to:

- update the threshold for the accomplishment timescale,
- remove cross-references to Service Bulletin No. A300-53-6122 in order to replace them by the Task Airworthiness Limitation Items (ALI) 53-15-58 which cancel Service Bulletin No. A300-53-6122.

CHANGES

The main changes of this revision are:

- Task Airworthiness Limitation Items (ALI) 53-15-58 added,
- Service Bulletin No. A300-53-6122 deleted,
- Threshold updated.

SUMMARY		
REASON/DESCRIPTION/OPERATIONAL CONSEQUENCES	REASON UPDATED	R
GENERAL EVALUATION	GENERAL EVALUATION TABLE UPDATED	R
MATERIAL PRICE INFORMATION	MATERIAL PRICE INFORMATION TABLE UPDATED	R

5 DATE: Nov 08/00

SERVICE BULLETIN No.: A300-53-6125

REVISION No.: 04 - Mar 17/15

Page: 1

EFFECTIVITY	OPERATOR LIST UPDATED	R
REFERENCES / REPERCUSSIONS	REFERENCES/REPERCUSSIONS TABLE UPDATED	R
PLANNING INFORMATION		
EFFECTIVITY	EFFECTIVITY RELATED INFORMATION UPDATED	R
Configuration definition	CONFIGURATION LIST UPDATED	R
CONF 001	CONFIGURATION DEFINITION UPDATED	R
Material Effectivity	MATERIAL EFFECTIVITY UPDATED	R
REASON	REASON UPDATED	R
History	HISTORY UPDATED	R
Objective/Action	OBJECTIVE/ACTION UPDATED	R
Advantages	ADVANTAGES UPDATED	R
COMPLIANCE		
Accomplishment Timescale	ACCOMPLISHMENT TIMESCALE UPDATED	R
REFERENCES	REFERENCES UPDATED	R
	REFERENCED DOCUMENTATION UPDATED	R
PUBLICATION AFFECTED	PUBLICATIONS AFFECTED UPDATED	R
	PUBLICATIONS AFFECTED ADDED	N
MATERIAL INFORMATION		
MATERIAL - PRICE AND AVAILABILITY	MATERIAL - PRICE AND AVAILABILITY UPDATED	R
Procurement Addresses	PROCUREMENT ADDRESSES UPDATED	R
Price and Availability	PRICE AND AVAILABILITY UPDATED MATERIAL AVAILABILITY UPDATED MATERIAL PRICE UPDATED MATERIAL SET UPDATED	R
LIST OF COMPONENTS		
Kit 536125A01R01	PART MATERIAL SET UPDATED QUANTITY UPDATED	R
LIST OF MATERIALS - OPERATOR SUPPLIED		
Consumable Materials		
Consumable CMLA01	CONSUMABLE MATERIAL SET UPDATED CONSUMABLE UPDATED	R
Components	COMPONENTS UPDATED	R
Component COMPA01	PART MATERIAL SET UPDATED	R
TOOLING		
Tools	TOOLS UPDATED	R
ACCOMPLISHMENT INSTRUCTIONS		
TASK 536125- 831-801-001- MODIFICATION	TASK SOLUTION UPDATED NOTE UPDATED CAUTION UPDATED	R
Subtask 536125-910-001-001	SUBTASK SOLUTION UPDATED CONSUMABLE UPDATED REFERENCED DOCUMENTATION UPDATED MATERIAL LIST UPDATED REFERENCES UPDATED	R

SERVICE BULLETIN
REVISION TRANSMITTAL SHEET

Subtask 536125-839-002-001	SUBTASK SOLUTION ADDED	N
Subtask 536125-839-001-001	SUBTASK SOLUTION DELETED FOR APPLICABLE MSN	D
Subtask 536125-941-002-001	SUBTASK SOLUTION UPDATED NOTE UPDATED REFERENCED DOCUMENTATION UPDATED PANEL UPDATED ZONE UPDATED	R
Subtask 536125-831-004-001	SUBTASK SOLUTION UPDATED	R
Subtask 536125-831-005-001	SUBTASK SOLUTION UPDATED NOTE UPDATED	R
Subtask 536125-831-006-001	SUBTASK SOLUTION UPDATED	R
Subtask 536125-831-007-001	SUBTASK SOLUTION UPDATED	R
Subtask 536125-831-008-001	SUBTASK SOLUTION UPDATED	R
Subtask 536125-831-009-001	SUBTASK SOLUTION UPDATED NOTE UPDATED	R
Subtask 536125-831-010-001	SUBTASK SOLUTION UPDATED MATERIAL LIST UPDATED	R
Subtask 536125-942-019-001	SUBTASK SOLUTION UPDATED PANEL UPDATED REFERENCED DOCUMENTATION UPDATED	R
Fig. A-FCAAA		
Fig. A-FCAAA Sheet 02	SHEET UPDATED	R
Fig. A-FCAAA Sheet 03	SHEET UPDATED	R
Fig. A-FCBAA		
Fig. A-FCBAA Sheet 01	SHEET UPDATED	R

FILING INSTRUCTIONS

This Service Bulletin has been generated electronically and is reissued as a complete document. Replace the complete document.

Put this Revision Transmittal Sheet in front of the Service Bulletin.

HISTORY OF PREVIOUS REVISIONS

Revision No. 01 issued to update the thresholds and modify the content following validation on aircraft MSN 0521 and to inform that this Service Bulletin is anticipated to be rendered mandatory.

This Service Bulletin has been validated on A300-600 aircraft MSN 0521.

Revision No. 02 issued to inform the operators that this Service Bulletin is rendered mandatory and to take into account the different configurations from repair solution currently given in ISB A300-53-6122 and modification No. 12977S22524 (CENTER FUSELAGE - REINFORCE FRAME BASE/ARCHJUNCTIONS).

Revision No. 03 issued to :

modify the thresholds value and the grace period,

delete the Config. 002 and Kit 536125A02R00 (MSN 0252 scrapped),
update the effectivity.

REVISION SEQUENCE

ORIGINAL: Nov 08/00

REVISION No.: 02 - Feb 25/05

REVISION No. : 03 - Sep 13/11

REVISION No. : 04 - Mar 17/15

AIRBUS
CUSTOMER SERVICES DIRECTORATE
1 Rond Point Maurice Bellonte
31707 BLAGNAC CEDEX
FRANCE
Tel : (33) 5 61 93 33 33
Telex : AIRBU 530526F
Fax : (33) 5 61 93 42 51

This summary is for information only and is not approved for modification of the aircraft.

MANDATORY MANDATORY MANDATORY

ATA SYSTEM: 53

TITLE: FUSELAGE - CENTER FUSELAGE - REINFORCE UPPER FRAME FEET FITTINGS.

****CONF ALL**

MODIFICATIONS

MODIFICATION CLASSIFICATION					
MAJOR	12168S21823				
MINOR	12977S22524				

NOTE: As per EASA IR 21, a minor change is one that has no appreciable effect on the mass, balance, structural strength, reliability, operational characteristics affecting the airworthiness of the product. All other changes are major changes.

REASON/DESCRIPTION/OPERATIONAL CONSEQUENCES

During inspection in accordance with Airworthiness Limitation Items (ALI) 53-15-54 on A300-600 aircraft, Frame 43, Frame 44, Frame 45 and Frame 46 were found cracked between stringers 24 to 30 on the aircraft right hand side and Frame 45 was found cracked on the aircraft left hand side. At the time of inspection, the aircraft had accumulated 26,100 Flight Cycles (FC) and 32,160 Flight Hours (FH).

On in-service aircraft, undetected cracks can lead to the rupture of the frame foot and subsequent cracking of the adjacent frames and fuselage skin which would require an extensive repair and could have an impact on pressure loading strength capacity of the structure.

This Service Bulletin requires performing expansion of the most fatigue sensitive fastener holes between Frame 41 and Frame 46 on the center box, upper fuselage bent sections, to improve the fatigue life of the area.

For information, when this Service Bulletin No. A300-53-6125 is not accomplished, inspections are required as per Airworthiness Limitation Items (ALI) 53-15-58. Previous inspections from Service Bulletin No. A300-53-6122 are cancelled and superseded by Airworthiness Limitation Items (ALI) 53-15-58.

5 DATE: Nov 08/00

SERVICE BULLETIN No.: A300-53-6125

REVISION No.: 04 - Mar 17/15

Page: 1

GENERAL EVALUATION

EVALUATION TABLE			
COMPLIANCE	MANDATORY (1)	CANCELS INSPECTION SB	NO
POTENTIAL AD	YES	A/C OPERATION AFFECTED	NO
RELIABILITY AFFECTED	NO	PAX COMFORT AFFECTED	NO
COST SAVING	NO	ETOPS AFFECTED	NO
STRUCTURAL LIFE EXTN	NO	VENDOR SB INVOLVED	NO
VALIDATION ON AIRCRAFT	YES		

NOTE (1): Service Bulletin must be accomplished.

NOTE: This Service Bulletin has been validated at original issue on A300-600 aircraft with Manufacturer Serial Number (MSN) 0521.

MATERIAL PRICE INFORMATION

MATERIAL PRICE INFORMATION TABLE			
MATERIAL SET	QTY PER A/C	PRICE PER A/C (USD)	MAIN PARTS
Kit 536125A01R01	2	28,100.00	Bolt, Pin, Collar, Nut
Supplementary kit 536125A01S01	2	17,500.00	Bolt, Pin, Collar, Nut
TOTAL		45,600.00	
Component COMPA01	2	See SB	Nut

EFFECTIVITY

This Service Bulletin is applicable to this (these) operator(s) :

06P 67Q ABR AHK BCS F2I FDX IRA IRM KAC MNB MRJ MSR
SUD TAR THA UQA URS UTP UZB

CONCURRENT REQUIREMENTS

None

REFERENCES / REPERCUSSIONS

TFU	None
OEB	None
AOT	None
SIL	51-012
LINE MAINTENANCE AFFECTED	No
LIFE LIMIT	None

NATURE OF THE WORK

AIRCRAFT	YES
EQUIPMENT	NO
HARD	NO

SERVICE BULLETIN
SUMMARY

SOFT	NO
OBRM	NO

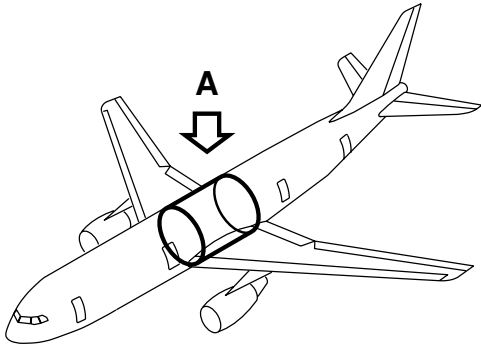
MANPOWER

Task 536125-831-801-001: MODIFICATION	
TOTAL MANHOURS	83.50
ELAPSED TIME (HOURS)	49.00

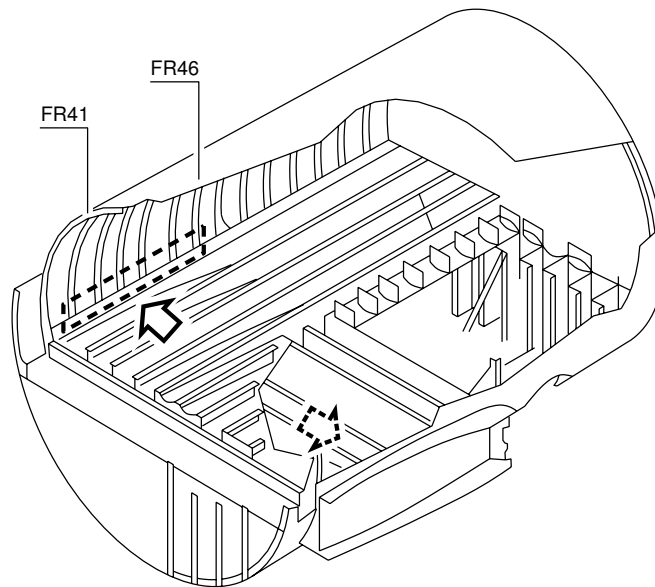
APPENDICES

None

****CONF ALL**



A



D_SB_536125_5_SAAA_01_00

Figure A-FSAAA - Sheet 01

AIRBUS
CUSTOMER SERVICES DIRECTORATE
1 Rond Point Maurice Bellonte
31707 BLAGNAC CEDEX
FRANCE
Tel : (33) 5 61 93 33 33
Telex : AIRBU 530526F
Fax : (33) 5 61 93 42 51

MANDATORY MANDATORY MANDATORY

ATA SYSTEM: 53

TITLE: FUSELAGE - CENTER FUSELAGE - REINFORCE UPPER FRAME FEET FITTINGS.

MODIFICATION No.: 12168S21823 12977S22524

This document contains AIRBUS PROPRIETARY INFORMATION and shall at all times remain the property of AIRBUS; no intellectual property right or licence is granted by AIRBUS in connection with any information contained in it. It is delivered on the express condition that said document and the information contained in it shall be treated as confidential, shall not be used for any purpose other than that for which it is hereby delivered. It shall not be disclosed in whole or in part to third parties and shall not be duplicated in any manner (except for the purposes of performing the tasks described hereunder and provided that any recipient of such document shall comply with the conditions herein), without AIRBUS prior written consent.

1. PLANNING INFORMATION

****CONF ALL**

A. EFFECTIVITY

NOTE: Modification No. 12168S21823 is embodied before delivery on aircraft with Manufacturer Serial Number (MSN) 0805 and subsequent.

NOTE: Modification No. 12977S22524 is applicable by Service Bulletin only.

(1) Models

B4-603 B4-605R B4-620 B4-622 B4-622R C4-605R/FC4-620 F4-605R

(2) Effectivity by MSN

0294 0344 0358 0361 0365 0380 0388 0401 0405 0408 0411 0414 0417 0477 0479
0505 0521 0525 0529-0530 0532 0536 0543 0546 0553 0555 0557-0559 0561 0563
0572 0575 0579 0581 0584 0602-0603 0607-0608 0611 0613 0617-0618 0621 0623
0625-0626 0629-0630 0632-0633 0637 0641 0643 0657 0659 0664 0666 0668 0670
0673 0677 0679 0683 0688 0694 0696 0699 0701 0703 0707 0709 0711 0713 0715
0717 0719 0721-0730 0732-0746 0748-0750 0752-0764 0766 0768-0775 0777-0794
0797 0799-0804

5 DATE: Nov 08/00

SERVICE BULLETIN No.: A300-53-6125

REVISION No.: 04 - Mar 17/15

Page: 1

(3) Effectivity by Operator

The Operator/MSN relationship is provided for information only and is correct at the time of issue in accordance with the information available to AIRBUS. Any future changes resulting from transfer of an aircraft from one operator to another will not be reflected in this list unless the Service Bulletin is revised for another reason.

OPERATOR	MSN
06P	0788
67Q	0584 0603 0744 0749 0764
ABR	0677 0743
AHK	0683 0770
BCS	0602 0617 0621 0637 0641 0670 0679 0703 0711 0724 0729 0730 0737 0740 0753 0783 0797
F2I	0294 0529 0557
FDX	0358 0361 0365 0388 0417 0477 0479 0530 0536 0543 0555 0559 0572 0575 0579 0581 0611 0613 0625 0630 0633 0657 0659 0664 0668 0688 0709 0713 0715 0726 0728 0735 0736 0738 0742 0745 0748 0752 0757 0759 0760 0761 0766 0768 0769 0771 0772 0774 0777 0778 0779 0780 0781 0789 0790 0791 0792 0793 0794 0799 0800 0801 0802 0803 0804
IRA	0632 0696 0723 0727
IRM	0380 0401 0405 0408 0411 0414 0546 0553 0608 0618 0623 0701 0773
KAC	0344 0673 0694 0699 0719 0721
MNB	0521 0525 0532 0734 0739 0755 0756 0758
MRJ	0750 0762
MSR	0561 0607
SUD	0666 0775
TAR	0505 0558 0563
THA	0629 0782 0784 0785 0786 0787
UQA	0626 0643
URS	0733
UTP	0707 0725 0732 0741 0746 0754 0763
UZB	0717 0722

(4) Configuration by MSN

MSN	CONFIGURATION
0294 0344 0358 0361 0365 0380 0388 0401 0405 0408 0411	001
0414 0417 0477 0479 0505 0521 0525 0529 0530 0532 0536	
0543 0546 0553 0555 0557 0558 0559 0561 0563 0572 0575	
0579 0581 0584 0602 0603 0607 0608 0611 0613 0617 0618	
0621 0623 0625 0626 0629 0630 0632 0633 0637 0641 0643	
0657 0659 0664 0666 0668 0670 0673 0677 0679 0683 0688	
0694 0696 0699 0701 0703 0707 0709 0711 0713 0715 0717	
0719 0721 0722 0723 0724 0725 0726 0727 0728 0729 0730	
0732 0733 0734 0735 0736 0737 0738 0739 0740 0741 0742	
0743 0744 0745 0746 0748 0749 0750 0752 0753 0754 0755	
0756 0757 0758 0759 0760 0761 0762 0763 0764 0766 0768	
0769 0770 0771 0772 0773 0774 0775 0777 0778 0779 0780	
0781 0782 0783 0784 0785 0786 0787 0788 0789 0790 0791	
0792 0793 0794 0797 0799 0800 0801 0802 0803 0804	

(5) Configuration definition

**CONF 001

Config. 001 is valid for all the aircraft given in the effectivity of this Service Bulletin as a standard configuration.

(6) Material Effectivity

MATERIAL	QTY PER A/C	SEE NOTES
Kit 536125A01R01	2	
Supplementary kit 536125A01S01	2	
Component COMPA01	2	
Consumable CMLA01	1	

This table shows the supplemental kits (S kits) needed to update the kits already held in your stock to the latest status.

Kit Held by Operator	Supplementary Kits Required	Latest Status of Kit
536125A01R00	536125A01S01	536125A01R01
536125A01R01	NONE	536125A01R01

B. CONCURRENT REQUIREMENTS

None

C. REASON

(1) History

During inspection in accordance with Airworthiness Limitation Items (ALI) 53-15-54 on A300-600 aircraft, Frame 43, Frame 44, Frame 45 and Frame 46 were found cracked between stringers 24 to 30 on the aircraft right hand side and Frame 45 was found cracked on the aircraft left hand side. At the time of inspection, the aircraft had accumulated 26,100 Flight Cycles (FC) and 32,160 Flight Hours (FH).

On in-service aircraft, undetected cracks can lead to the rupture of the frame foot and subsequent cracking of the adjacent frames and fuselage skin which would require an extensive repair and could have an impact on pressure loading strength capacity of the structure.

(2) Objective/Action

This Service Bulletin requires performing expansion of the most fatigue sensitive fastener holes between Frame 41 and Frame 46 on the center box, upper fuselage bent sections, to improve the fatigue life of the area.

(3) Advantages

For information, when this Service Bulletin No. A300-53-6125 is not accomplished, inspections are required as per Airworthiness Limitation Items (ALI) 53-15-58. Previous inspections from Service Bulletin No. A300-53-6122 are cancelled and superseded by Airworthiness Limitation Items (ALI) 53-15-58.

(4) Operational/Maintenance Consequences

None

D. DESCRIPTION

To accomplish this Service Bulletin it is necessary to :

Task 536125-831-801-001: MODIFICATION

- (1) Do the Cold Expansion of the Holes on FR41.
- (2) Do the Cold Expansion of the Holes on FR42.
- (3) Do the Cold Expansion of the Holes on FR43.
- (4) Do the Cold Expansion of the Holes on FR44.
- (5) Do the Cold Expansion of the Holes on FR45.
- (6) Do the Cold Expansion of the Holes on FR46.
- (7) Repair the Hole H1 on FR41 thru FR46.
- (8) ADDITIONAL KIT (introduced by revision 02 of this Service Bulletin)

E. COMPLIANCE

(1) Classification

MANDATORY: Service Bulletin must be accomplished.

(2) Accomplishment Timescale

Accomplishment of this Service Bulletin is mandatory at the following thresholds:

Aircraft model	THRESHOLD (FC OR FH WHICHEVER OCCURS FIRST)	
	Flight Cycles	Flight Hours
A300-600 AFT>1.5FH/FC	10200	22100
A300-600 AFT<=1.5FH/FC	11000	16600

Table 1

NOTE: AFT: Average Flight Time

This Service Bulletin has been classified Mandatory by the issue of an Airworthiness Directive (AD) published by the European Aviation Safety Agency (EASA). The AD must be used as the reference document for the mandated accomplishment timescale.

No more maintenance action in the area covered by this Service Bulletin are necessary up to:

Aircraft model	THRESHOLD FROM THIS SB EMBODIED (FC OR FH WHICHEVER OCCURS FIRST)	
	Flight Cycles	Flight Hours
A300-600 Every AFT	27100	47300

Table 2

NOTE: AFT: Average Flight Time

NOTE: Not exceeding this threshold, it is necessary to perform modification Service Bulletin No. A300-53-6178 to reach Limit Of Validity (LOV) of the aircraft.

F. APPROVAL

The technical content of this document is approved under authority of Design Organization Approval No. EASA.21J.031.

If an aircraft listed in the effectivity has a modification or repair embodied that is not of AIRBUS origin, and which affects the content of this Service Bulletin, the operator is responsible for obtaining approval by its airworthiness authority for any adaptation necessary before incorporation of the Service Bulletin.

G. MANPOWER

The manpower estimates given in this Service Bulletin are based on the direct labor cost to do the work. These estimates assume that the work will be done by experienced personnel, and may need to be revised upwards to suit operator's circumstances. The estimates do not include the time to prepare, plan or inspect the work. Manufacture and procurement of parts and tools, drying times for paints, sealants, etc., and general administration work are also not included.

Task 536125-831-801-001: MODIFICATION	
Get Access	4.00
On Aircraft	
Do the Cold Expansion of the Holes on FR41.	9.00
Do the Cold Expansion of the Holes on FR42.	9.00
Do the Cold Expansion of the Holes on FR43.	10.00
Do the Cold Expansion of the Holes on FR44.	10.00
Do the Cold Expansion of the Holes on FR45.	9.00
Do the Cold Expansion of the Holes on FR46.	9.00
Repair the Hole H1 on FR41 thru FR46.	18.00
ADDITIONAL KIT (introduced by revision 02 of this Service Bulletin)	1.00
Close-Up	4.50
TOTAL MANHOURS	83.50
ELAPSED TIME (HOURS)	49.00

H. WEIGHT AND BALANCE

Not Changed

I. ELECTRICAL LOAD DATA

Not Changed

J. REFERENCES

Airworthiness Limitation Item (ALI)	Airworthiness Limitation Items (ALI) 53-15-54 Airworthiness Limitation Items (ALI) 53-15-58
Aircraft Maintenance Manual (AMM)	06-21-00 06-31-53 06-41-00 20-21-12 24-00-00 25-21-00 25-22-11 25-23-31 25-58-22 52-10-00
Consumable Material List (CML)	
Elec. Std. Practices Manual (ESPM)	20-55-00
Non Destructive Test Manual (NTM)	53-15-54
Service Bulletin (SB)	A300-53-6122 A300-53-6178
Standards Manual (SM)	

Structural Repair Manual (SRM)	51-23-00	51-40-00	51-40-20
	51-40-30	51-40-40	51-40-41
	51-43-00	51-75-10	

K. PUBLICATION AFFECTED

Airworthiness Limitation Item (ALI)	Airworthiness Limitation Items (ALI) 53-15-58
Maintenance Planning Document (MPD)	531558-01-1

L. INTERCHANGEABILITY/MIXABILITY

Not Applicable

M. SPARES

None

This Page Intentionally Left Blank

2. MATERIAL INFORMATION

****CONF ALL**

A. MATERIAL - PRICE AND AVAILABILITY

(1) Procurement Addresses

Customers with aircraft shown in the effectivity of this Service Bulletin should send a purchase order to AIRBUS. Quote the number of this Service Bulletin. The address is:

Kit 536125A01R01 Supplementary kit 536125A01S01	AIRBUS Material, Logistics and Suppliers Weg beim Jaeger 150 D-22335 HAMBURG GERMANY For ordering by internet: http://spares.airbus.com For ordering by fax: +49 40 50 76 2590 For ordering by E-mail: airbus.kit@airbus.com
--	---

AIRBUS Material, Logistics and Suppliers do not stock standard hardware as competitive multiple suppliers ensure access to minimum prices. AIRBUS recommends Customers with aircraft shown in the effectivity of this Service Bulletin to send a purchase order to B/E Aerospace. The address is:

Component COMPA01	B/E AEROSPACE INC. CONSUMABLES MANAGEMENT 10000 NW 15th Terrace Miami FL 33172 USA Tel EMEA: +49 (0) 40 822 285 31500 Tel US: +1 305 925 2600 Tel ASIA: +1 310 900 1300 Fax EMEA: +49 (0) 40 822 285 31010 Fax US: +1 305 507 7191 Fax ASIA: +1 310 819 1200 SITA: MIAMMCR E-Mail: AOGdesk_CMG@beaerospace.com internet: http://www.beconsumables.com or, alternatively any other source on the open market.
-------------------	--

(2) Price and Availability

This table shows the supplemental kits (S kits) needed to update the kits already held in your stock to the latest status.

Kit Held by Operator	Supplementary Kits Required	Latest Status of Kit
536125A01R00	536125A01S01	536125A01R01
536125A01R01	NONE	536125A01R01

NOTE: Kit 536125A01R01 does not require an Supplementary kit 536125A01S01 because Supplementary kit 536125A01S01 is included in

Kit 536125A01R01.

Kit 536125A01R01	
Cost	14,050.00 USD
Availability	180 calendar days from receipt of order

The availability given above is the standard lead time from the date of your purchase order. If items are required before this time, please include a retrofit planning schedule with your order so that we can try to comply with your requirements.

The sales terms (costs and availability) are estimated in relation to economic conditions. The latest valid price and lead time for ordering purposes shall be obtained through the AirbusSpares portal or through a request for quotation to airbus.kit@airbus.com.

Supplementary kit 536125A01S01	
Cost	8,750.00 USD
Availability	120 calendar days from receipt of order

The availability given above is the standard lead time from the date of your purchase order. If items are required before this time, please include a retrofit planning schedule with your order so that we can try to comply with your requirements.

The sales terms (costs and availability) are estimated in relation to economic conditions. The latest valid price and lead time for ordering purposes shall be obtained through the AirbusSpares portal or through a request for quotation to airbus.kit@airbus.com.

Component COMPA01

Operator supplied standard hardware parts required to accomplish this Service Bulletin, are to be supplied from the operator's stock.

B. INDUSTRY SUPPORT INFORMATION

AIRBUS will not provide industry support for accomplishment of this Service Bulletin.

C. LIST OF COMPONENTS

Kit 536125A01R01

ITEM	NEW PART N°	QTY (UM)	KEYWORD	ITEM	OLD PART N°	INT	SEE NOTES
1	ASNA2027V5-7	24	Bolt				
2	ASNA2027V5-8	12	Bolt				
3	ASNA2529-5	50	Nut				
4	NSA5330-8	62	Collar				
5	NSA5330-10	12	Collar				
6	NSA5359-4-7	30	Pin				
7	NSA5359-4-8	18	Pin				
8	NSA5359-5-7	4	Pin				
9	ASNA2027V5-6	14	Bolt				
10	NSA5359-4-6	26	Pin				

ITEM	NEW PART N°	QTY (UM)	KEYWORD	ITEM	OLD PART N°	INT	SEE NOTES
11	NSA5359-5-6	4	Pin				
12	NSA5359-5-8	4	Pin				
30	NSA5351V6-7	4	Pin				
31	NSA5330-12	12	Collar				
32	NSA5351V6-6	4	Pin				
33	NSA5351V6-8	4	Pin				
34	ASNA2027V4-8	6	Bolt				
35	ASNA2027V4-10	6	Bolt				
36	NSA5359-4-5	6	Pin				

NOTE: If you find part numbers of hardware components in the related kit(s) which you cannot identify in the LIST OF COMPONENTS of this Service Bulletin, refer to Standards Manual (SM). The SM will give you the correct part number to part number relationship.

Supplementary kit 536125A01S01

ITEM	NEW PART N°	QTY (UM)	KEYWORD	ITEM	OLD PART N°	INT	SEE NOTES
4	NSA5330-8	6	Collar				
6	NSA5359-4-7	4	Pin				
7	NSA5359-4-8	4	Pin				
10	NSA5359-4-6	10	Pin				
30	NSA5351V6-7	4	Pin				
31	NSA5330-12	12	Collar				
32	NSA5351V6-6	4	Pin				
33	NSA5351V6-8	4	Pin				
34	ASNA2027V4-8	6	Bolt				
35	ASNA2027V4-10	6	Bolt				
36	NSA5359-4-5	6	Pin				

NOTE: If you find part numbers of hardware components in the related kit(s) which you cannot identify in the LIST OF COMPONENTS of this Service Bulletin, refer to Standards Manual (SM). The SM will give you the correct part number to part number relationship.

D. LIST OF MATERIALS - OPERATOR SUPPLIED

(1) Consumable Materials

Consumable CMLA01

ITEM	DESCRIPTION	REFERENCE TO CML MAT. No.	QTY PER A/C	SEE NOTES
	Primer Polyurethane Paint-Corrosion Inhibiting	04EAC2	As required	
	Top Coat Polyurethane-Grey Internal Structure	04JME4	As required	

ITEM	DESCRIPTION	REFERENCE TO CML MAT. No.	QTY PER A/C	SEE NOTES
	Non Aqueous Cleaner-General	08BAA9	As required	

(2) Components

Component COMPA01

ITEM	NEW PART N°	QTY (UM)	KEYWORD	ITEM	OLD PART N°	INT	SEE NOTES
40	ASNA2531-4	6	NUT				

NOTE: If you find part numbers of hardware components in the related kit(s) which you cannot identify in the LIST OF COMPONENTS of this Service Bulletin, refer to Standards Manual (SM). The SM will give you the correct part number to part number relationship.

NOTE: The above list of components is not an AIRBUS Kit, the required parts shall be ordered as necessary through the given channel.

NOTE: The components listed above are only necessary if a bush has been installed during the Inspection Service Bulletin No.A300-53-6122. The quantity of these items are to be ordered as required.

(3) Equipment

None

E. PARTS TO BE RE-IDENTIFIED BY OPERATOR

None

F. TOOLING

(1) Tooling - Price and Availability

None

(2) Tools

To accomplish this Service Bulletin it is necessary to use the tools listed in the subsequent referenced AMM and/or NTM tasks:

- Equipment and materials for check of the holes as per NTM 53-15-54 Part. 6.

Fatigue Technology Incorporated (FTI) has allocated tool kit number FTI-A300-53-6125-1 for accomplishment of this Service Bulletin. Operators interested in obtaining the FTI tool kit should contact:

Fatigue technology Inc.
401 Andover Park East
Seattle, WA USA

98188-7605

E-mail : sales@fatiguetech.com

Web site: www.fatiguetech.com

Phone : (1) 206 246 2010

Phax : (1) 206 244 9886

(3) Special Tools

None

This Page Intentionally Left Blank

3. ACCOMPLISHMENT INSTRUCTIONS

Task 536125-831-801-001 - MODIFICATION

WARNING: MAKE SURE THAT YOU OBEY ALL THE WARNINGS AND ALL THE CAUTIONS INCLUDED IN THE REFERENCED PROCEDURES.

CAUTION: ALWAYS OBEY THE PRECAUTIONS THAT FOLLOW TO KEEP ELECTRICAL WIRING IN A SATISFACTORY CONDITION (ELECTRICALLY AND MECHANICALLY SERVICEABLE). WHEN YOU DO MAINTENANCE WORK, REPAIRS OR MODIFICATIONS, ALWAYS KEEP ELECTRICAL WIRING, COMPONENTS AND THE WORK AREA AS CLEAN AS POSSIBLE. TO DO THIS :

- PUT PROTECTION, SUCH AS PLASTIC SHEETING, CLOTHS, ETC; AS NECESSARY ON WIRING AND COMPONENTS.
- REGULARLY REMOVE ALL SHAVINGS, UNWANTED MATERIAL AND OTHER CONTAMINATION.

THESE PRECAUTIONS WILL DECREASE THE RISK OF CONTAMINATION AND DAMAGE TO THE ELECTRICAL WIRING INSTALLATION.

IF THERE IS CONTAMINATION REFER TO ESPM 20-55-00.

NOTE: The accomplishment instructions of this Service Bulletin include procedures given in other documents or in other sections of the Service Bulletin. When the words "refer to" are used and the operator has a procedure accepted by the local authority he belongs to, the accepted alternative procedure can be used. When the words "in accordance with" are used then the given procedure must be followed.

NOTE: The access and close-up instructions, not comprising return to service tests, in this Service Bulletin do not constitute or affect the technical intent of the Service Bulletin. Operators can therefore, as deemed necessary, omit or add access and/or close-up steps to add flexibility to their maintenance operations as long as the technical intent of the Service Bulletin is met within the set parameters.

NOTE: Manual titles given in the accomplishment instructions are referred to by acronyms. Refer to paragraph 1.J., References, for the definition of acronyms.

NOTE: This Service Bulletin is classified mandatory or expected to be classified mandatory by an Airworthiness Directive (AD). The paragraphs 3.C. and 3.D. in these accomplishment instructions are Required for Compliance (RC) and must be done to comply with the AD. Other paragraphs are recommended and may be deviated from, done as part of other actions or done with accepted methods different from those given in the Service Bulletin, as long as the RC paragraphs can be done and the aircraft can be put back into a serviceable condition.

Task Associated Data

Zone
241 242

Manpower	
TOTAL MANHOURS	83.50
ELAPSED TIME (HOURS)	49.00

A. GENERAL

(1) Subtask 536125-910-001-001 - Standard Practices

Manpower Resources	
Skills	NON SPECIFIC

Material necessary to do the job

Consumable CMLA01				
ITEM	DESCRIPTION	REFERENCE TO CML MAT. No.	QTY PER A/C	SEE NOTES
	Primer Polyurethane Paint-Corrosion Inhibiting	04EAC2	As required	
	Top Coat Polyurethane-Grey Internal Structure	04JME4	As required	
	Non Aqueous Cleaner-General	08BAA9	As required	

References	
Aircraft Maintenance Manual (AMM)	06-21-00, Page Block 001 06-31-53, Page Block 001 06-41-00, Page Block 001 20-21-12, Page Block 001
Consumable Material List (CML)	
Standards Manual (SM)	
Structural Repair Manual (SRM)	51-23-00 51-40-00 51-40-20 51-40-30 51-40-40 51-40-41 51-43-00 51-75-10

- (a) For the Frame (FR) identification, refer to AMM 06-31-53, Page Block 001.
- (b) For the identification of zones, refer to AMM 06-21-00, Page Block 001.
- (c) For the identification of access panels, refer to AMM 06-41-00, Page Block 001.
- (d) For the specification of the materials (Mat. No.) given in this Service Bulletin, refer to the Consumable Material List (CML).

(e) Refer to the AIRBUS Standards Manual (SM) if you find part numbers for the hardware components in the related kit(s) which you cannot identify in the LIST OF COMPONENTS of this Service Bulletin. The SM will give you the correct part number to part number relationship.

(f) Use a non-metallic spatula to remove the sealant and clean the areas with:

Non Aqueous Cleaner-General	08BAA9	As required
--------------------------------	--------	-------------

(g) Remove and install fasteners in accordance with SRM 51-40-20.

(h) Obtain fastener hole diameters and drill data in accordance with SRM 51-40-40.

(i) Do the cold expansion of the fastener holes in accordance with SRM 51-40-41.

(j) Obtain alternative and substitute fastener data in accordance with SRM 51-40-30.

(k) Renew the protective finish in accordance with SRM 51-75-10 with:

Primer Polyurethane Paint- Corrosion Inhibiting	04EAC2	As required
---	--------	-------------

Top Coat Polyurethane-Grey Internal Structure	04JME4	As required
---	--------	-------------

(l) Obtain alternative and substitute fastener data in accordance with SRM 51-40-30.

(m) To torque tighten the standard threaded fasteners, refer to AMM 20-21-12, Page Block 001.

(n) If alternative and substitute fasteners have to be used, you must make sure that the associated nut/collar are compatible in accordance with SRM 51-40-00 "Mating Part" column.

(o) If the length of any fastener specified in this Service Bulletin does not meet installation standards given in SRM Chapter 51, then a fastener of the same specification, or an approved substitute, with a length which meets the installation standards given in SRM Chapter 51 may be used. In addition, washers may be installed for fastener grip length in accordance with SRM Chapter 51.

(2) Subtask 536125-839-002-001 - Administrative

Manpower Resources	
Skills	NON SPECIFIC

Write in the applicable aircraft records that you have done all the work given in this Service Bulletin.

B. PREPARATION

(1) Subtask 536125-941-002-001 - Job Set-up

Manpower Resources	
Skills	NON SPECIFIC

References	
Aircraft Maintenance Manual (AMM)	24-00-00, Page Block 301 25-21-00, Page Block 401 25-22-11, Page Block 401 25-23-31, Page Block 401 25-58-22, Page Block 401 52-10-00

NOTE: The items given in this note shall be considered as the basic Aircraft configuration before you start a maintenance task:

- Aircraft on the ground resting on landing gear (the ground safety locks and the wheel chocks are in position on the landing gear)
 - Engine shut down, thrust reversers closed and locked
 - Aircraft in clean configuration
 - Parking brake applied
 - Aircraft electrical network de-energized
 - Hydraulic systems depressurized
 - Access to the cockpit and cabin is available
 - All circuit breakers are in closed position
 - All controls in NORM, AUTO or OFF position
- (a) Make sure that the aircraft is electrically grounded, refer to AMM 24-00-00 Page Block 301.
- (b) Put an access platform in position at zones 241 and 242.
- (c) Except for freighter, between Frame 41 and Frame 46, remove the passengers seats, refer to AMM 25-21-00 Page Block 401.
- (d) Except for freighter, between Frame 41 and Frame 46, remove the passenger-compartment lining-panels, refer to AMM 25-23-31 Page Block 401.
- (e) For freighter, between Frame 41 and Frame 46, remove the compartment lining-panels, refer to AMM 25-58-22 Page Block 401.
- (f) Between Frame 41 and Frame 46, remove the heat and sound insulation blankets, refer to AMM 25-22-11 Page Block 401.

C. PROCEDURE

NOTE: The description is given for the LH side. The work on the RH side is the same.

NOTE: For holes which have been previously repaired with a diameter bigger than described in this Service Bulletin, please contact AIRBUS SEER for further instructions and Repair Approval Sheet (RAS).

(1) Subtask 536125-831-004-001 - Do the Cold Expansion of the Holes on FR41.

Work Zones and Access Panels			
	Zone	Access/Work location	
	241	Work location	Frame 41
	242	Work location	Frame 41

Manpower Resources	
Manhours	9.00
Minimum number of person	1
Subtask elapsed time	9.00
Skills	AIRFRAME NON DESTRUCTIVE TESTING

Material necessary to do the job

Kit 536125A01R01				
ITEM	NEW PART N°	QTY (UM)	KEYWORD	SEE NOTES
1	ASNA2027V5-7	7	Bolt	
3	ASNA2529-5	8	Nut	
4	NSA5330-8	9	Collar	
5	NSA5330-10	2	Collar	
6	NSA5359-4-7	8	Pin	
7	NSA5359-4-8	1	Pin	
8	NSA5359-5-7	2	Pin	
9	ASNA2027V5-6	1	Bolt	
10	NSA5359-4-6	2	Pin	
30	NSA5351V6-7	2	Pin	
31	NSA5330-12	2	Collar	

References	
Non Destructive Test Manual (NTM)	53-15-54 Part. 6
Structural Repair Manual (SRM)	51-40-41
Fig. A-FBAAA Cold Expansion of the Holes on FR41 (LH and RH Side)	Sheet 01 Sheet 02 Sheet 03
Fig. A-FBGAA Table of the Expanded Holes	Sheet 01

NOTE: For the holes H2 and H3 : if the existing hole is more than 8.732 mm (0.3437 in.) max. diameter, contact AI.

(a) Remove the fasteners, refer to the table given in [Fig. A-FBAAA Sheet 01](#), [Fig. A-FBAAA Sheet 02](#), [Fig. A-FBAAA Sheet 03](#).

(b) Do a check by rotating probe, refer to NTM 53-15-54 Part. 6.

NOTE (01): For the holes 1, 4, 5, 6, 7 and 8:

- If no crack is found go to para. (c) of this Subtask.
- If crack, ream out the crack, step by step, up to a max. diameter corresponding to 7.260 mm (0.2858 in.).
- If the crack is out of the limits, contact AI.

NOTE (02): For the holes 2 and 3:

- If no crack is found go to para. (c) of this Subtask.
- If crack, ream out the crack, step by step, up to a max. diameter corresponding to 8.810 mm (0.3468 in.).
If the initial hole diameter is more than 8.732 mm (0.3437 in.), contact AI.
- If the crack is out of the limits, contact AI.

If the frame foot is cutout :

NOTE (03): For the holes 1:

- If no crack is found go to para. (c) of this Subtask.
- If crack, contact AI.

If a bush is installed on the frame :

NOTE (04): For the holes 1:

- If no crack is found go to SUBTASK 536125-831-010 001 Repair the Hole H1 on FR41 thru FR46. .
- If crack, contact AI.

(c) Ream the holes to the initial hole diameter, then do the cold expansion operation and ream to the final diameter (Refer to the table given in [Fig. A-FBGAA Sheet 01](#)).

Do this in accordance with SRM 51-40-41 or use the cold expansion tool KIT FTI-A300-53-6125-1.

(d) Clean the drilled area.

(e) Install in the cold expanded holes:

Refer to [Fig. A-FBAAA Sheet 01](#), [Fig. A-FBAAA Sheet 02](#), [Fig. A-FBAAA Sheet 03](#)

1 For the holes H1:

1 pin NSA5359-4-7 Item 6

or

1 bolt ASNA2027V5-7 Item 1

with

1 collar NSA5330-8 Item 4

or

1 nut ASNA2529-5 Item 3

- If the frame foot is cutout:

1 pin NSA5359-4-6 Item 10

or

1 pins NSA5359-4-7 Item 6

or

1 pin NSA5359-4-8 Item 7

with

1 collar(s) NSA5330-8 Item 4

2 For the holes H2 and H3:

2 pin NSA5359-4-7 Item 6

or

2 bolt ASNA2027V5-7 Item 1

or

2 pin NSA5359-5-7 Item 8

or

2 pin NSA5351V6-7 Item 30

with

2 collar NSA5330-8 Item 4

or

- 2 nut ASNA2529-5 Item 3
- or
- 2 collar NSA5330-10 Item 5
- or
- 2 collar NSA5330-12 Item 31
- 3** For the holes H4, H5, H7 and H8:
- 4 pin NSA5359-4-7 Item 6
- or
- 4 bolt ASNA2027V5-7 Item 1
- with
- 4 collar NSA5330-8 Item 4
- or
- 4 nut ASNA2529-5 Item 3
- 4** For the hole H6:
- 1 pin NSA5359-4-6 Item 10
- or
- 1 bolt ASNA2027V5-6 Item 9
- with
- 1 collar NSA5330-8 Item 4
- or
- 1 nut ASNA2529-5 Item 3

(f) Renew the protective finish.

(2) Subtask 536125-831-005-001 - Do the Cold Expansion of the Holes on FR42.

Work Zones and Access Panels			
	Zone	Access/Work location	
	241	Work location	Frame 42
	242	Work location	Frame 42

Manpower Resources	
Manhours	9.00
Minimum number of person	1
Subtask elapsed time	9.00
Skills	AIRFRAME NON DESTRUCTIVE TESTING

Material necessary to do the job

Kit 536125A01R01				
ITEM	NEW PART N°	QTY (UM)	KEYWORD	SEE NOTES
1	ASNA2027V5-7	2	Bolt	
3	ASNA2529-5	8	Nut	
4	NSA5330-8	9	Collar	
5	NSA5330-10	2	Collar	
6	NSA5359-4-7	3	Pin	
7	NSA5359-4-8	1	Pin	
9	ASNA2027V5-6	6	Bolt	
10	NSA5359-4-6	7	Pin	
11	NSA5359-5-6	2	Pin	
31	NSA5330-12	2	Collar	
32	NSA5351V6-6	2	Pin	

References	
Non Destructive Test Manual (NTM)	53-15-54 Part. 6
Structural Repair Manual (SRM)	51-40-41
Fig. A-FBBAA Cold Expansion of the Holes on FR42 (LH and RH Side)	Sheet 01 Sheet 02 Sheet 03
Fig. A-FBGAA Table of the Expanded Holes	Sheet 01

NOTE: For the holes H2 and H3: if the existing hole is more than 8.732 mm (0.3437 in.) max. diameter, contact AI.

- (a) Remove the fasteners, refer to the table given in [Fig. A-FBBAA Sheet 01](#), [Fig. A-FBBAA Sheet 02](#), [Fig. A-FBBAA Sheet 03](#).
- (b) Do a check by rotating probe, refer to NTM 53-15-54 Part. 6.

NOTE (01): For the holes 1, 4, 5, 6, 7 and 8:

- If no crack is found go to para. (c) of this Subtask.
- If crack, ream out the crack, step by step, up to a max. diameter corresponding to 7.260 mm (0.2858 in.).

SERVICE BULLETIN

- If the crack is out of the limits, contact AI.

NOTE (02): For the holes 2 and 3:

- If no crack is found go to para. (c) of this Subtask.
- If crack, ream out the crack, step by step, up to a max. diameter corresponding to 8.810 mm (0.3468 in.). If the initial hole diameter is more than 8.732 mm (0.3437 in.), contact AI.
- If the crack is out of the limits, contact AI.

If the frame foot is cutout :

NOTE (03): For the holes 1:

- If no crack is found go to para. (c) of this Subtask.
- If crack, contact AI.

If a bush is installed on the frame:

NOTE (04): For the holes 1:

- If no crack is found go to SUBTASK 536125-831-010 001 Repair the Hole H1 on FR41 thru FR46. .
- If crack, contact AI.

- (c) Ream the holes to the initial hole diameter, then do the cold expansion operation and ream to the final diameter, refer to the table given in [Fig. A-FBGAA Sheet 01](#).

Do this in accordance with SRM 51-40-41 or use the cold expansion tool KIT FTI-A300-53-6125-1.

- (d) Clean the drilled area.
- (e) Install in the cold expanded holes:

Refer to [Fig. A-FBBAA Sheet 01](#), [Fig. A-FBBAA Sheet 02](#), [Fig. A-FBBAA Sheet 03](#)

1 For the holes H1:

1	pin	NSA5359-4-6	Item 10
	or		
1	bolt	ASNA2027V5-6	Item 9
	with		
1	collar	NSA5330-8	Item 4
	or		

1	nut	ASNA2529-5	Item 3
	-	If the frame foot is cutout:	
1	pins	NSA5359-4-6	Item 10
	or		
1	pin	NSA5359-4-7	Item 6
	or		
1	pin	NSA5359-4-8	Item 7
	with		
1	collar(s)	NSA5330-8	Item 4
	<u>2</u>	For the holes H2 and H3:	
2	pin	NSA5359-4-6	Item 10
	or		
2	bolt	ASNA2027V5-6	Item 9
	or		
2	pin	NSA5359-5-6	Item 11
	or		
2	pin	NSA5351V6-6	Item 32
	with		
2	collar	NSA5330-8	Item 4
	or		
2	nut	ASNA2529-5	Item 3
	or		
2	collar	NSA5330-10	Item 5
	or		
2	collar	NSA5330-12	Item 31
	<u>3</u>	For the holes H4, H5 and H6:	
3	pin	NSA5359-4-6	Item 10
	or		
3	bolt	ASNA2027V5-6	Item 9

- with
- | | | | |
|---|--------|------------|--------|
| 3 | collar | NSA5330-8 | Item 4 |
| | or | | |
| 3 | nut | ASNA2529-5 | Item 3 |
- 4 For the holes H7 and H8:
- | | | | |
|---|------|--------------|--------|
| 2 | pin | NSA5359-4-7 | Item 6 |
| | or | | |
| 2 | bolt | ASNA2027V5-7 | Item 1 |
- with
- | | | | |
|---|--------|------------|--------|
| 2 | collar | NSA5330-8 | Item 4 |
| | or | | |
| 2 | nut | ASNA2529-5 | Item 3 |

(f) Renew the protective finish.

(3) Subtask 536125-831-006-001 - Do the Cold Expansion of the Holes on FR43.

Work Zones and Access Panels			
	Zone	Access/Work location	
	241	Work location	Frame 43
	242	Work location	Frame 43

Manpower Resources	
Manhours	10.00
Minimum number of person	1
Subtask elapsed time	10.00
Skills	AIRFRAME NON DESTRUCTIVE TESTING

Material necessary to do the job

Kit 536125A01R01				
ITEM	NEW PART N°	QTY (UM)	KEYWORD	SEE NOTES
1	ASNA2027V5-7	2	Bolt	
3	ASNA2529-5	9	Nut	
4	NSA5330-8	10	Collar	
5	NSA5330-10	2	Collar	
6	NSA5359-4-7	3	Pin	
7	NSA5359-4-8	1	Pin	
9	ASNA2027V5-6	7	Bolt	

ITEM	NEW PART N°	QTY (UM)	KEYWORD	SEE NOTES
10	NSA5359-4-6	8	Pin	
11	NSA5359-5-6	2	Pin	
31	NSA5330-12	2	Collar	
32	NSA5351V6-6	2	Pin	

References	
Non Destructive Test Manual (NTM)	53-15-54 Part. 6
Structural Repair Manual (SRM)	51-40-41
Fig. A-FBCAA Cold Expansion of the Holes on FR43 (LH and RH Side)	Sheet 01 Sheet 02 Sheet 03
Fig. A-FBGAA Table of the Expanded Holes	Sheet 01

NOTE: For the holes H2 and H3 : if the existing hole is more than 8.732 mm (0.3437 in.) max. diameter, contact AI.

- (a) Remove the fasteners, refer to the table given in [Fig. A-FBCAA Sheet 01](#), [Fig. A-FBCAA Sheet 02](#), [Fig. A-FBCAA Sheet 03](#).
- (b) Do a check by rotating probe, refer to NTM 53-15-54 Part. 6.

NOTE (01): For the holes 1, 4, 5, 6, 7, 8 and 9 :

- If no crack is found go to para. (c) of this Subtask.
- If crack, ream out the crack, step by step, up to a max. diameter corresponding to 7.260mm (0.2858 in.).
- If the crack is out of the limits, contact AI.

NOTE (02): For the holes 2 and 3 :

- If no crack is found go to para. (c) of this Subtask.
- If crack, ream out the crack, step by step, up to a max. diameter corresponding to 8.810 mm (0.3468 in.).
If the initial hole diameter is more than 8.732 mm (0.3437 in.), contact AI.
- If the crack is out of the limits, contact AI.

If the frame foot is cutout :

NOTE (03): For the holes 1 :

- If no crack is found go to para. (c) of this Subtask.
- If crack, contact AI.

If a bush is installed on the frame :

NOTE (04): For the holes 1 :

- If no crack is found go to SUBTASK 536125-831-010 001 Repair the Hole H1 on FR41 thru FR46. .
- If crack, contact AI.

(c) Ream the holes to the initial hole diameter, then do the cold expansion operation and ream to the final diameter, refer to the table given in [Fig. A-FBGAA Sheet 01](#).

Do this in accordance with SRM 51-40-41 or use the cold expansion tool KIT FTI-A300-53-6125-1.

(d) Clean the drilled area.

(e) Install in the cold expanded holes:

Refer to [Fig. A-FBCAA Sheet 01](#), [Fig. A-FBCAA Sheet 02](#), [Fig. A-FBCAA Sheet 03](#)

1 For the holes H1:

1 pin NSA5359-4-6 Item 10

or

1 bolt ASNA2027V5-6 Item 9

with

1 collar NSA5330-8 Item 4

or

1 nut ASNA2529-5 Item 3

- If the frame foot is cutout:

1 pins NSA5359-4-6 Item 10

or

1 pin NSA5359-4-7 Item 6

or

1 pin NSA5359-4-8 Item 7

with

1 collar(s) NSA5330-8 Item 4

2 For the holes H2 and H3:

2 pin NSA5359-4-6 Item 10

	or		
2	bolt	ASNA2027V5-6	Item 9
	or		
2	pin	NSA5359-5-6	Item 11
	or		
2	pin	NSA5351V6-6	Item 32
	with		
2	collar	NSA5330-8	Item 4
	or		
2	nut	ASNA2529-5	Item 3
	or		
2	collar	NSA5330-10	Item 5
	or		
2	collar	NSA5330-12	Item 31
I	<u>3</u>	For the holes H4, H5, H6 and H7:	
4	pin	NSA5359-4-6	Item 10
	or		
4	bolt	ASNA2027V5-6	Item 9
	with		
4	collar	NSA5330-8	Item 4
	or		
4	nut	ASNA2529-5	Item 3
I	<u>4</u>	For the holes H8 and H9:	
2	pin	NSA5359-4-7	Item 6
	or		
2	bolt	ASNA2027V5-7	Item 1
	with		
2	collar	NSA5330-8	Item 4
	or		
2	nut	ASNA2529-5	Item 3

(f) Renew the protective finish.

(4) Subtask 536125-831-007-001 - Do the Cold Expansion of the Holes on FR44.

Work Zones and Access Panels			
	Zone	Access/Work location	
	241	Work location	Frame 44
	242	Work location	Frame 44

Manpower Resources	
Manhours	10.00
Minimum number of person	1
Subtask elapsed time	10.00
Skills	AIRFRAME NON DESTRUCTIVE TESTING

Material necessary to do the job

Kit 536125A01R01				
ITEM	NEW PART N°	QTY (UM)	KEYWORD	SEE NOTES
1	ASNA2027V5-7	3	Bolt	
2	ASNA2027V5-8	6	Bolt	
3	ASNA2529-5	9	Nut	
4	NSA5330-8	10	Collar	
5	NSA5330-10	2	Collar	
6	NSA5359-4-7	4	Pin	
7	NSA5359-4-8	7	Pin	
10	NSA5359-4-6	1	Pin	
12	NSA5359-5-8	2	Pin	
31	NSA5330-12	2	Collar	
33	NSA5351V6-8	2	Pin	

References	
Non Destructive Test Manual (NTM)	53-15-54 Part. 6
Structural Repair Manual (SRM)	51-40-41
Fig. A-FBDAA Cold Expansion of the Holes on FR44 (LH and RH Side)	Sheet 01 Sheet 02 Sheet 03
Fig. A-FBGAA Table of the Expanded Holes	Sheet 01

NOTE: For the holes H2 and H3 : if the existing hole is more than 8.732 mm (0.3437 in.) max. diameter, contact AI.

(a) Remove the fasteners, refer to the table given in [Fig. A-FBDAA Sheet 01](#), [Fig. A-FBDAA Sheet 02](#), [Fig. A-FBDAA Sheet 03](#).

(b) Do a check by rotating probe, refer to NTM 53-15-54 Part. 6.

NOTE (01): For the holes 1, 4, 5, 6, 7, 8 and 9:

- If no crack is found go to para. (c) of this Subtask.
- If crack, ream out the crack, step by step, up to a max. diameter corresponding to 7.260 mm (0.2858 in.).
- If the crack is out of the limits, contact AI.

NOTE (02): For the holes 2 and 3:

- If no crack is found go to para. (c) of this Subtask.
- If crack, ream out the crack, step by step, up to a max. diameter corresponding to 8.810 mm (0.3468 in.).
If the initial hole diameter is more than 8.732 mm (0.3437 in.), contact AI.
- If the crack is out of the limits, contact AI.

If the frame foot is cutout :

NOTE (03): For the holes 1:

- If no crack is found go to para. (c) of this Subtask.
- If crack, contact AI.

If a bush is installed on the frame:

NOTE (04): For the holes 1:

- If no crack is found go to SUBTASK 536125-831-010 001 Repair the Hole H1 on FR41 thru FR46. .
- If crack, contact AI.

(c) Ream the holes to the initial hole diameter, then do the cold expansion operation and ream to the final diameter, refer to the table given in [Fig. A-FBGAA Sheet 01](#).

Do this in accordance with SRM 51-40-41 or use the cold expansion tool KIT FTI-A300-53-6125-1.

(d) Clean the drilled area.

(e) Install in the cold expanded holes:

Refer to [Fig. A-FBDAA Sheet 01](#), [Fig. A-FBDAA Sheet 02](#), [Fig. A-FBDAA Sheet 03](#)

1 For the holes H1:

1	pin	NSA5359-4-8	Item 7
---	-----	-------------	--------

	or		
1	bolt	ASNA2027V5-8	Item 2
	with		
1	collar	NSA5330-8	Item 4
	or		
1	nut	ASNA2529-5	Item 3
	- If the frame foot is cutout:		
1	pin	NSA5359-4-6	Item 10
	or		
1	pin	NSA5359-4-7	Item 6
	or		
1	pins	NSA5359-4-8	Item 7
	with		
1	collar(s)	NSA5330-8	Item 4
	<u>2</u> For the holes H2 and H3:		
2	pin	NSA5359-4-8	Item 7
	or		
2	bolt	ASNA2027V5-8	Item 2
	or		
2	pin	NSA5359-5-8	Item 12
	or		
2	pin	NSA5351V6-8	Item 33
	with		
2	collar	NSA5330-8	Item 4
	or		
2	nut	ASNA2529-5	Item 3
	or		
2	collar	NSA5330-10	Item 5
	or		

- 2 collar NSA5330-12 Item 31
- 3 For the holes H4, H5 and H6:
- 3 pin NSA5359-4-8 Item 7
- or
- 3 bolt ASNA2027V5-8 Item 2
- with
- 3 collar NSA5330-8 Item 4
- or
- 3 nut ASNA2529-5 Item 3
- 4 For the holes H7, H8 and H9:
- 3 pin NSA5359-4-7 Item 6
- or
- 3 bolt ASNA2027V5-7 Item 1
- with
- 3 collar NSA5330-8 Item 4
- or
- 3 nut ASNA2529-5 Item 3

(f) Renew the protective finish.

(5) Subtask 536125-831-008-001 - Do the Cold Expansion of the Holes on FR45.

Work Zones and Access Panels			
	Zone	Access/Work location	
	241	Work location	Frame 45
	242	Work location	Frame 45

Manpower Resources	
Manhours	9.00
Minimum number of person	1
Subtask elapsed time	9.00
Skills	AIRFRAME NON DESTRUCTIVE TESTING

Material necessary to do the job

Kit 536125A01R01				
ITEM	NEW PART N°	QTY (UM)	KEYWORD	SEE NOTES
1	ASNA2027V5-7	8	Bolt	
3	ASNA2529-5	8	Nut	
4	NSA5330-8	9	Collar	
5	NSA5330-10	2	Collar	
6	NSA5359-4-7	9	Pin	
7	NSA5359-4-8	1	Pin	
8	NSA5359-5-7	2	Pin	
10	NSA5359-4-6	1	Pin	
30	NSA5351V6-7	2	Pin	
31	NSA5330-12	2	Collar	

References	
Non Destructive Test Manual (NTM)	53-15-54 Part. 6
Structural Repair Manual (SRM)	51-40-41
Fig. A-FBEAA Cold Expansion of the Holes on FR45 (LH and RH Side)	Sheet 01 Sheet 02 Sheet 03
Fig. A-FBGAA Table of the Expanded Holes	Sheet 01

NOTE: For the holes H2 and H3 : if the existing hole is more than 8.732 mm (0.3437 in.) max. diameter, contact AI.

- (a) Remove the fasteners, refer to the table given in [Fig. A-FBEAA Sheet 01](#), [Fig. A-FBEAA Sheet 02](#), [Fig. A-FBEAA Sheet 03](#).
- (b) Do a check by rotating probe, refer to NTM 53-15-54 Part. 6.

NOTE (01): For the holes 1, 4, 5, 6, 7 and 8:

- If no crack is found go to para. (c) of this Subtask.
- If crack, ream out the crack, step by step, up to a max. diameter corresponding to 7.260 mm (0.2858 in.).
- If the crack is out of the limits, contact AI.

NOTE (02): For the holes 2 and 3:

- If no crack is found go to para. (c) of this Subtask.
- If crack, ream out the crack, step by step, up to a max. diameter corresponding to 8.810 mm (0.3468 in.). If the initial hole diameter is more than 8.732 mm (0.3437 in.), contact AI.
- If the crack is out of the limits, contact AI.

If the frame foot is cutout:

NOTE (03): For the holes 1:

- If no crack is found go to para. (c) of this Subtask.
- If crack, contact AI.

If a bush is installed on the frame:

NOTE (04): For the holes 1:

- If no crack is found go to SUBTASK 536125-831-010 001 Repair the Hole H1 on FR41 thru FR46. .
- If crack, contact AI.

(c) Ream the holes to the initial hole diameter, then do the cold expansion operation and ream to the final diameter, refer to the table given in [Fig. A-FBGAA Sheet 01](#).

Do this in accordance with SRM 51-40-41 or use the cold expansion tool KIT FTI-A300-53-6125-1.

(d) Clean the drilled area.

(e) Install in the cold expanded holes:

Refer to [Fig. A-FBEAA Sheet 01](#), [Fig. A-FBEAA Sheet 02](#), [Fig. A-FBEAA Sheet 03](#)

1 For the holes H1:

1	pin	NSA5359-4-7	Item 6
	or		
1	bolt	ASNA2027V5-7	Item 1
	with		
1	collar	NSA5330-8	Item 4
	or		
1	nut	ASNA2529-5	Item 3

I

- If the frame foot is cutout:

1	pin	NSA5359-4-6	Item 10
	or		
1	pins	NSA5359-4-7	Item 6
	or		
1	pin	NSA5359-4-8	Item 7
	with		
1	collar(s)	NSA5330-8	Item 4

I2 For the holes H2 and H3:

2	pin	NSA5359-4-7	Item 6
	or		
2	bolt	ASNA2027V5-7	Item 1
	or		
2	pin	NSA5359-5-7	Item 8
	or		
2	pin	NSA5351V6-7	Item 30
	with		
2	collar	NSA5330-8	Item 4
	or		
2	nut	ASNA2529-5	Item 3
	or		
2	collar	NSA5330-10	Item 5
	or		
2	collar	NSA5330-12	Item 31

I3 For the holes H4, H5, H6, H7 and H8:

5	pin	NSA5359-4-7	Item 6
	or		
5	bolt	ASNA2027V5-7	Item 1
	with		

5 collar NSA5330-8 Item 4
or

5 nut ASNA2529-5 Item 3

(f) Renew the protective finish.

(6) Subtask 536125-831-009-001 - Do the Cold Expansion of the Holes on FR46.

Work Zones and Access Panels			
	Zone	Access/Work location	
	241	Work location	Frame 46
	242	Work location	Frame 46

Manpower Resources	
Manhours	9.00
Minimum number of person	1
Subtask elapsed time	9.00
Skills	AIRFRAME NON DESTRUCTIVE TESTING

Material necessary to do the job

Kit 536125A01R01				
ITEM	NEW PART N°	QTY (UM)	KEYWORD	SEE NOTES
1	ASNA2027V5-7	2	Bolt	
2	ASNA2027V5-8	6	Bolt	
3	ASNA2529-5	8	Nut	
4	NSA5330-8	9	Collar	
5	NSA5330-10	2	Collar	
6	NSA5359-4-7	3	Pin	
7	NSA5359-4-8	7	Pin	
10	NSA5359-4-6	1	Pin	
12	NSA5359-5-8	2	Pin	
31	NSA5330-12	2	Collar	
33	NSA5351V6-8	2	Pin	

References	
Non Destructive Test Manual (NTM)	53-15-54 Part. 6
Structural Repair Manual (SRM)	51-40-41
Fig. A-FBFAA Cold Expansion of the Holes on FR46 (LH and RH Side)	Sheet 01 Sheet 02 Sheet 03
Fig. A-FBGAA Table of the Expanded Holes	Sheet 01

NOTE: For the holes H2 and H3: if the existing hole is more than 8.732 mm (0.3437 in.) max. diameter, contact AI.

- (a) Remove the fasteners, refer to the table given in [Fig. A-FBFAA Sheet 01](#), [Fig. A-FBFAA Sheet 02](#), [Fig. A-FBFAA Sheet 03](#).
- (b) Do a check by rotating probe, refer to NTM 53-15-54 Part. 6).

NOTE (01): For the holes 1, 4, 5, 6, 7 and 8:

- If no crack is found go to para. (c) of this Subtask.
- If crack, ream out the crack, step by step, up to a max. diameter corresponding to 7.260 mm (0.2858 in.).
- If the crack is out of the limits, contact AI.

NOTE (02): For the holes 2 and 3:

- If no crack is found go to para. (c) of this Subtask.
- If crack, ream out the crack, step by step, up to a max. diameter corresponding to 8.810 mm (0.3468 in.).
If the initial hole diameter is more than 8.732 mm (0.3437 in.), contact AI.
- If the crack is out of the limits, contact AI.

If the frame foot is cutout:

NOTE (03): For the holes 1:

- If no crack is found go to para. (c) of this Subtask.
- If crack, contact AI.

If a bush is installed on the frame:

NOTE (04): For the holes 1:

- If no crack is found go to SUBTASK 536125-831-010 001 Repair the Hole H1 on FR41 thru FR46. .
- If crack, contact AI.

- (c) Ream the holes to the initial hole diameter, then do the cold expansion operation and ream to the final diameter, refer to the table given in [Fig. A-FBGAA Sheet 01](#).

Do this in accordance with SRM 51-40-41 or use the cold expansion tool KIT FTI-A300-53-6125-1.

- (d) Clean the drilled area.

(e) Install in the cold expanded holes:

Refer to [Fig. A-FBFAA Sheet 01](#), [Fig. A-FBFAA Sheet 02](#), [Fig. A-FBFAA Sheet 03](#)

1 For the holes H1:

1 pin NSA5359-4-8 Item 7

or

1 bolt ASNA2027V5-8 Item 2

with

1 collar NSA5330-8 Item 4

or

1 nut ASNA2529-5 Item 3

- If the frame foot is cutout:

1 pin NSA5359-4-6 Item 10

or

1 pin NSA5359-4-7 Item 6

or

1 pins NSA5359-4-8 Item 7

with

1 collar(s) NSA5330-8 Item 4

2 For the holes H2 and H3:

2 pin NSA5359-4-8 Item 7

or

2 bolt ASNA2027V5-8 Item 2

or

2 pin NSA5359-5-8 Item 12

or

2 pin NSA5351V6-8 Item 33

with

2 collar NSA5330-8 Item 4

or

- 2 nut ASNA2529-5 Item 3
- or
- 2 collar NSA5330-10 Item 5
- or
- 2 collar NSA5330-12 Item 31
- 3 For the holes H4, H5 and H6:
- 3 pin NSA5359-4-8 Item 7
- or
- 3 bolt ASNA2027V5-8 Item 2
- with
- 3 collar NSA5330-8 Item 4
- or
- 3 nut ASNA2529-5 Item 3
- 4 For the holes H7 and H8:
- 2 pin NSA5359-4-7 Item 6
- or
- 2 bolt ASNA2027V5-7 Item 1
- with
- 2 collar NSA5330-8 Item 4
- or
- 2 nut ASNA2529-5 Item 3

(f) Renew the protective finish.

(7) Subtask 536125-831-010-001 - Repair the Hole H1 on FR41 thru FR46.

Work Zones and Access Panels			
	Zone	Access/Work location	
	241	Work location	from Frame 41 to Frame 46
	242	Work location	from Frame 41 to Frame 46

Manpower Resources	
Manhours	18.00
Minimum number of person	1
Subtask elapsed time	18.00
Skills	AIRFRAME

Material necessary to do the job

Kit 536125A01R01				
ITEM	NEW PART N°	QTY (UM)	KEYWORD	SEE NOTES
4	NSA5330-8	6	Collar	
10	NSA5359-4-6	6	Pin	
34	ASNA2027V4-8	6	Bolt	
35	ASNA2027V4-10	6	Bolt	
36	NSA5359-4-5	6	Pin	

Component COMPA01				
ITEM	NEW PART N°	QTY (UM)	KEYWORD	SEE NOTES
40	ASNA2531-4	6	NUT	

NOTE: The above list of components is not an AIRBUS Kit, the required parts shall be ordered as necessary through the given channel.

NOTE: The components listed above are only necessary if a bush has been installed during the Inspection Service Bulletin No.A300-53-6122. The quantity of these items are to be ordered as required.

References	
Structural Repair Manual (SRM)	51-40-41
Fig. A-FCAAA Repair of the Hole H1 on FR41 thru FR46	Sheet 01 Sheet 02 Sheet 03
Fig. A-FCBAA Principle of Bush Manufacturing	Sheet 01

- (a) Remove the fasteners and the bush for the hole H1, refer to the table given in the [Fig. A-FCAAA Sheet 03](#).
- (b) Cut out the frame foot in relation with the dimensions given in the [Fig. A-FCAAA Sheet 01](#).

NOTE: When you do the cut of the frame foot, be careful not to damage the structure.

- (c) Clean the cutout area.

- (d) Ream the hole H1 to the initial hole diameter, then do the cold expansion operation and ream to the final diameter, refer to the table given in [Fig. A-FCAAA Sheet 03](#).

Do this in accordance with SRM 51-40-41 or use the cold expansion tool KIT FTI-A300-53-6125-1.

- (e) Install a shouldered bush on the frame in accordance with the dimensions given in the [Fig. A-FCBAA Sheet 01](#).

- (f) Install the new fasteners with the bush :

Refer to [Fig. A-FCAAA Sheet 02](#), [Fig. A-FCAAA Sheet 03](#)

6 bolt ASNA2027V4-8 Item 34

or

6 bolt ASNA2027V4-10 Item 35

with

6 Nut ASNA2531-4 Item 40

NOTE: Install a shim of the same thickness as the cut out part of the frame foot before installations of the floor fitting support.

- (g) Renew the protective finish.

- (h) Remove the fasteners for the holes H10, H11 and H12. Refer to the table given in the [Fig. A-FCAAA Sheet 03](#).

- (i) Ream the hole H10, H11 and H12 to the initial hole diameter, then do the cold expansion operation and ream to the final diameter, refer to the table given in [Fig. A-FCAAA Sheet 03](#).

Do this in accordance with SRM 51-40-41 or use the cold expansion tool KIT FTI-A300-53-6125-1.

- (j) Clean the drilled area.

- (k) Install in the cold expanded holes H10, H11 and H12:

NOTE: Due to low possibility of frame repair, the quantity given in this subtask is valid for two frames on one side (LH or RH side).

Refer to [Fig. A-FCAAA Sheet 01](#), [Fig. A-FCAAA Sheet 02](#), [Fig. A-FCAAA Sheet 03](#)

6 pin NSA5359-4-5 Item 36

or

6 pin NSA5359-4-6 Item 10

with

6 collar NSA5330-8 Item 4

(l) Renew the protective finish.

(8) Subtask 536125-831-011-001 - ADDITIONAL KIT (introduced by revision 02 of this Service Bulletin)

Manpower Resources	
Manhours	1.00
Minimum number of person	1
Subtask elapsed time	1.00
Skills	NON SPECIFIC

Material necessary to do the job

Supplementary kit 536125A01S01				
ITEM	NEW PART N°	QTY (UM)	KEYWORD	SEE NOTES
4	NSA5330-8	6	Collar	
6	NSA5359-4-7	4	Pin	
7	NSA5359-4-8	4	Pin	
10	NSA5359-4-6	10	Pin	
30	NSA5351V6-7	4	Pin	
31	NSA5330-12	12	Collar	
32	NSA5351V6-6	4	Pin	
33	NSA5351V6-8	4	Pin	
34	ASNA2027V4-8	6	Bolt	
35	ASNA2027V4-10	6	Bolt	
36	NSA5359-4-5	6	Pin	

NOTE: The additional kit is valid for operators which have ordered Kit 536125A01R00 and have not accomplished this Service Bulletin yet.

(a) The Supplementary kit 536125A01S01 includes :

6	collar	NSA5330-8	Item 4
4	pin	NSA5359-4-7	Item 6
4	pin	NSA5359-4-8	Item 7
10	pin	NSA5359-4-6	Item 10
4	pin	NSA5351V6-7	Item 30
12	collar	NSA5330-12	Item 31
4	pin	NSA5351V6-6	Item 32

4	pin	NSA5351V6-8	Item 33
6	bolt	ASNA2027V4-8	Item 34
6	bolt	ASNA2027V4-10	Item 35
6	pin	NSA5359-4-5	Item 36

D. TEST

None

E. CLOSE-UP

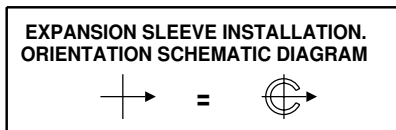
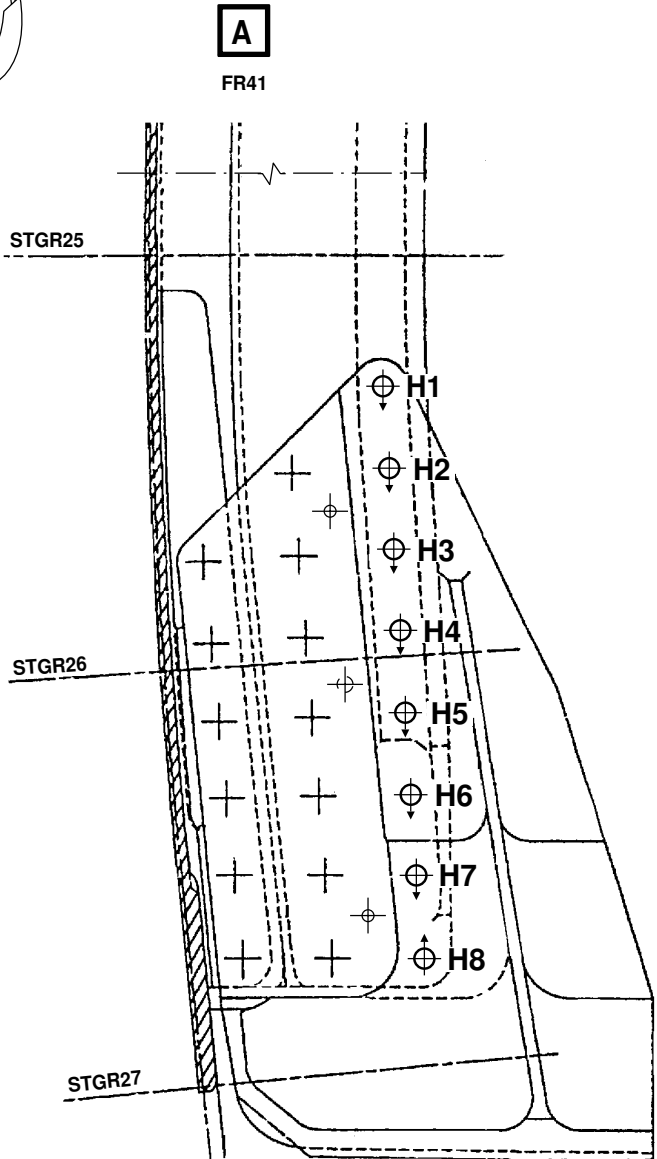
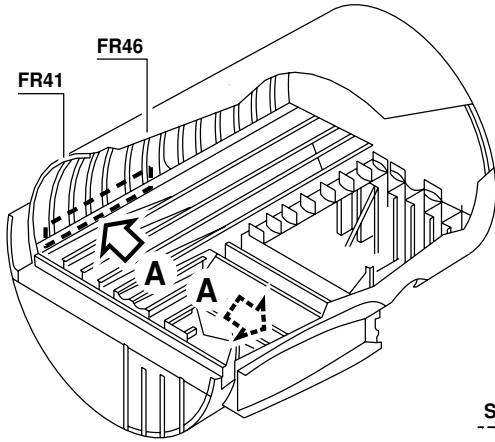
(1) Subtask 536125-942-019-001 - Close-up

Manpower Resources	
Skills	NON SPECIFIC

References	
Aircraft Maintenance Manual (AMM)	24-00-00, Page Block 301 25-21-00, Page Block 401 25-22-11, Page Block 401 25-23-31, Page Block 401 25-58-22, Page Block 401 52-10-00

- (a) Make sure that the work areas are clean and clear of tools and other items of equipment.
- (b) Between Frame 41 and Frame 46, install the heat and sound insulation blankets, refer to AMM 25-22-11 Page Block 401.
- (c) For freighter, between Frame 41 and Frame 46, install the compartment lining-panels, refer to AMM 25-58-22 Page Block 401.
- (d) Except for freighter, between Frame 41 and Frame 46, install the passenger-compartment lining-panels, refer to AMM 25-23-31 Page Block 401.
- (e) Except for freighter, between Frame 41 and Frame 46, install the passengers seats, refer to AMM 25-21-00 Page Block 401.
- (f) Remove the access platform(s).
- (g) Put the aircraft back to its initial configuration.

**CONF ALL



D_SB_536125_5_BAAA_01_01

Figure A-FBAAA - Sheet 01
Cold Expansion of the Holes on FR41 (LH and RH Side)

****CONF ALL**

TABLE FOR THE INSTALLATION OF THE FASTENERS

HOLE NO.	OLD FASTENER	ITEM	NEW FASTENER	ITEM	NUT	ITEM
H1	ASNA2004V4-7 or ASNA2027V4-7	(13) (22)	NSA5359-4-7	6	NSA5330-8	4
	NSA5357-4-7	(16)	ASNA2027V5-7	1	ASNA2529-5	3
	NSA5359-4-7	(18)	ASNA2027V5-7	1	ASNA2529-5	3
IF A BUSH IS INSTALLED ON THE FRAME						
H1	REFER TO FIGURE A-FCAAA					
IF THE FRAME FOOT IS CUTOUT						
H1	ASNA2027V4-6	(21)	NSA5359-4-6	10	NSA5330-8	4
	ASNA2027V4-7	(22)	NSA5359-4-7	6	NSA5330-8	4
	ASNA2027V4-8	(23)	NSA5359-4-8	7	NSA5330-8	4

HOLE NO.	OLD FASTENER	ITEM	NEW FASTENER	ITEM	NUT	ITEM
H2 H3	ASNA2004V4-7 or ASNA2027V4-7	(13) (22)	NSA5359-4-7	6	NSA5330-8	4
	NSA5357-4-7	(16)	ASNA2027V5-7	1	ASNA2529-5	3
	NSA5359-4-7	(18)	ASNA2027V5-7	1	ASNA2529-5	3
	NSA5351V5-7	(15)	NSA5359-5-7	8	NSA5330-10	5
	NSA5357-5-7	(40)	NSA5351V6-7	30	NSA5330-12	31
	NSA5359-5-7	(41)	NSA5351V6-7	30	NSA5330-12	31

NOTE: IF FINDING, INSTALL THE BOLT RELATED TO THE FINAL COLD EXPANDED DIAMETER.

D_SB_536125_5_BAAA_02_01

Figure A-FBAAA - Sheet 02
Cold Expansion of the Holes on FR41 (LH and RH Side)

****CONF ALL**

TABLE FOR THE INSTALLATION OF THE FASTENERS

HOLE NO.	OLD FASTENER	ITEM	NEW FASTENER	ITEM	NUT	ITEM
H4 H5 H7 H8	ASNA2004V4-7 or ASNA2027V4-7	(13) (22)	NSA5359-4-7	6	NSA5330-8	4
	NSA5357-4-7	(16)	ASNA2027V5-7	1	ASNA2529-5	3
	NSA5359-4-7	(18)	ASNA2027V5-7	1	ASNA2529-5	3
H6	ASNA2004V4-6 or ASNA2027V4-6	(20) (21)	NSA5359-4-6	10	NSA5330-8	4
	NSA5357-4-6	(25)	ASNA2027V5-6	9	ASNA2529-5	3
	NSA5359-4-6	(26)	ASNA2027V5-6	9	ASNA2529-5	3

NOTE: IF FINDING, INSTALL THE BOLT RELATED TO THE FINAL COLD EXPANDED DIAMETER.

D_SB_536125_5_BAAA_03_00

Figure A-FBAAA - Sheet 03
Cold Expansion of the Holes on FR41 (LH and RH Side)

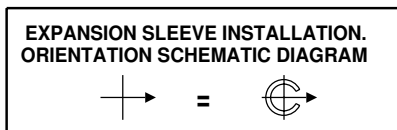
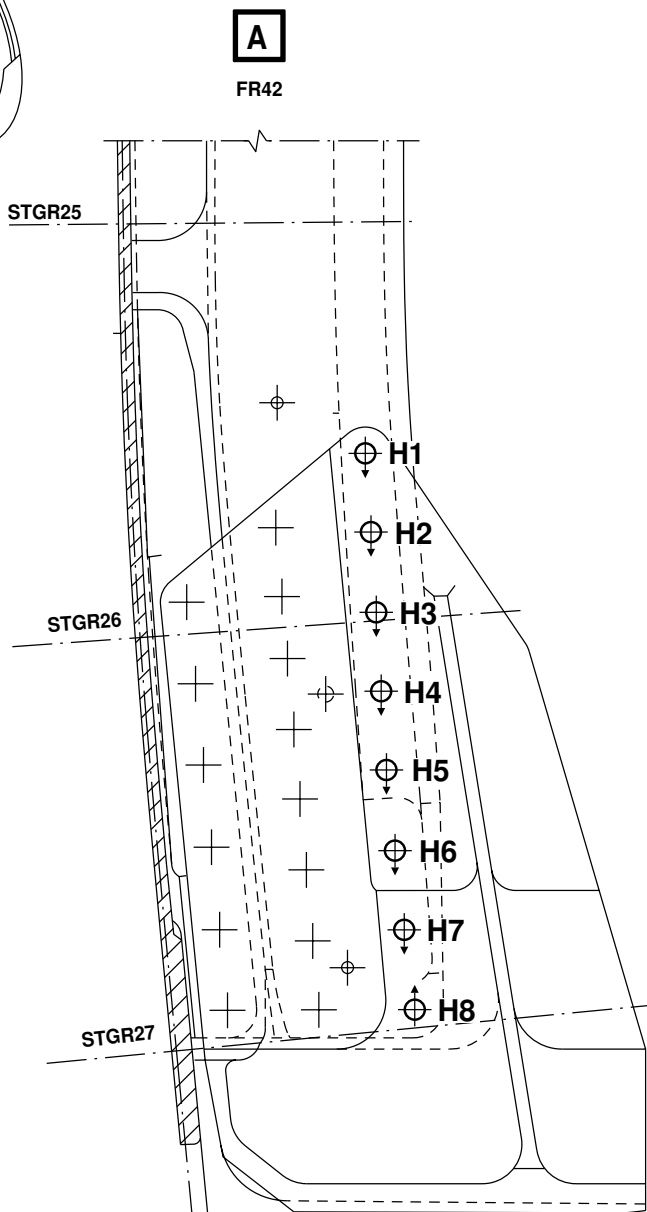
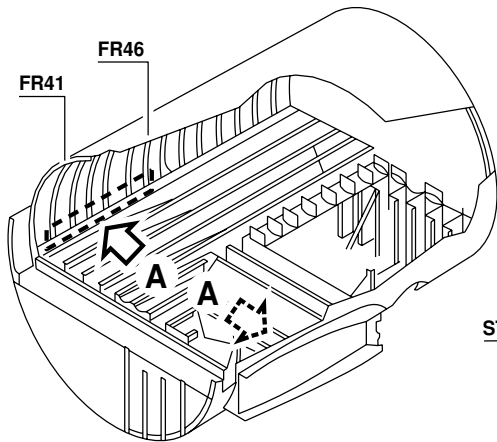
5 DATE: Nov 08/00

SERVICE BULLETIN No.: A300-53-6125

REVISION No.: 04 - Mar 17/15

Page: 47

**CONF ALL



D_SB_536125_5_BBAA_01_01

Figure A-FBBAA - Sheet 01
Cold Expansion of the Holes on FR42 (LH and RH Side)

5 DATE: Nov 08/00

SERVICE BULLETIN No.: A300-53-6125

REVISION No.: 04 - Mar 17/15

Page: 48

****CONF ALL**

TABLE FOR THE INSTALLATION OF THE FASTENERS

HOLE NO.	OLD FASTENER	ITEM	NEW FASTENER	ITEM	NUT	ITEM
H1	ASNA2004V4-6 or ASNA2027V4-6	(20) (21)	NSA5359-4-6	10	NSA5330-8	4
	NSA5357-4-6	(25)	ASNA2027V5-6	9	ASNA2529-5	3
	NSA5359-4-6	(26)	ASNA2027V5-6	9	ASNA2529-5	3
IF A BUSH IS INSTALLED ON THE FRAME						
H1	REFER TO FIGURE A-FCAAA					
IF THE FRAME FOOT IS CUTOUT						
H1	ASNA2027V4-6	(21)	NSA5359-4-6	10	NSA5330-8	4
	ASNA2027V4-7	(22)	NSA5359-4-7	6	NSA5330-8	4
	ASNA2027V4-8	(23)	NSA5359-4-8	7	NSA5330-8	4

HOLE NO.	OLD FASTENER	ITEM	NEW FASTENER	ITEM	NUT	ITEM
H2 H3	ASNA2004V4-6 or ASNA2027V4-6	(20) (21)	NSA5359-4-6	10	NSA5330-8	4
	NSA5357-4-6	(25)	ASNA2027V5-6	9	ASNA2529-5	3
	NSA5359-4-6	(26)	ASNA2027V5-6	9	ASNA2529-5	3
	NSA5351V5-6	(24)	NSA5359-5-6	11	NSA5330-10	5
	NSA5357-5-6	(42)	NSA5351V6-6	32	NSA5330-12	31
	NSA5359-5-6	(43)	NSA5351V6-6	32	NSA5330-12	31

NOTE: IF FINDING, INSTALL THE BOLT RELATED TO THE FINAL COLD EXPANDED DIAMETER.

D_SB_536125_5_BBAA_02_01

Figure A-FBBAA - Sheet 02
Cold Expansion of the Holes on FR42 (LH and RH Side)

****CONF ALL**

TABLE FOR THE INSTALLATION OF THE FASTENERS

HOLE NO.	OLD FASTENER	ITEM	NEW FASTENER	ITEM	NUT	ITEM
H4 H5 H6	ASNA2004V4-6 or ASNA2027V4-6	(20) (21)	NSA5359-4-6	10	NSA5330-8	4
	NSA5357-4-6	(25)	ASNA2027V5-6	9	ASNA2529-5	3
	NSA5359-4-6	(26)	ASNA2027V5-6	9	ASNA2529-5	3
H7 H8	ASNA2004V4-7 or ASNA2027V4-7	(13) (22)	NSA5359-4-7	6	NSA5330-8	4
	NSA5357-4-7	(16)	ASNA2027V5-7	1	ASNA2529-5	3
	NSA5359-4-7	(18)	ASNA2027V5-7	1	ASNA2529-5	3

NOTE: IF FINDING, INSTALL THE BOLT RELATED TO THE FINAL COLD EXPANDED DIAMETER.

D_SB_536125_5_BBAA_03_00

Figure A-FBBAA - Sheet 03
Cold Expansion of the Holes on FR42 (LH and RH Side)

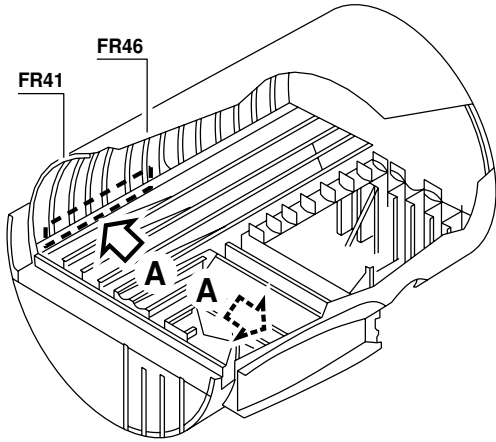
5 DATE: Nov 08/00

SERVICE BULLETIN No.: A300-53-6125

REVISION No.: 04 - Mar 17/15

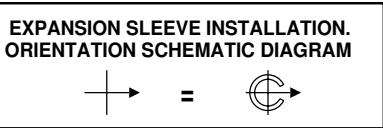
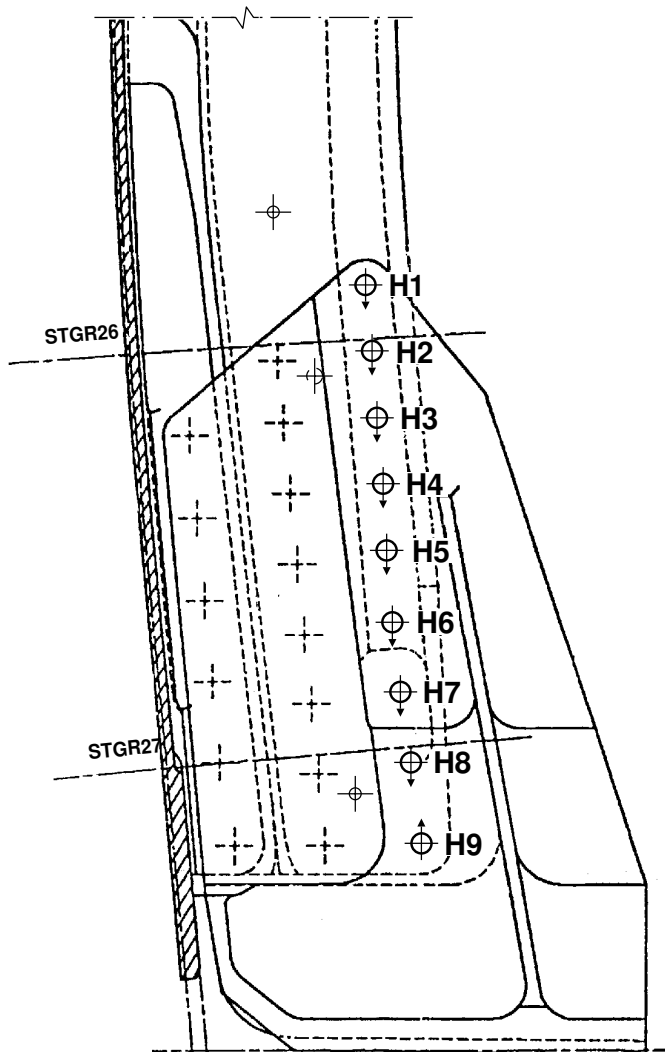
Page: 50

**CONF ALL



A

FR43



D_SB_536125_5_BCAA_01_01

Figure A-FBCAA - Sheet 01
Cold Expansion of the Holes on FR43 (LH and RH Side)

****CONF ALL**

TABLE FOR THE INSTALLATION OF THE FASTENERS

HOLE NO.	OLD FASTENER	ITEM	NEW FASTENER	ITEM	NUT	ITEM
H1	ASNA2004V4-6 or ASNA2027V4-6	(20)	NSA5359-4-6	10	NSA5330-8	4
		(21)				
	NSA5357-4-6	(25)	ASNA2027V5-6	9	ASNA2529-5	3
	NSA5359-4-6	(26)	ASNA2027V5-6	9	ASNA2529-5	3
IF A BUSH IS INSTALLED ON THE FRAME						
H1	REFER TO FIGURE A-FCAAA					
IF THE FRAME FOOT IS CUTOUT						
H1	ASNA2027V4-6	(21)	NSA5359-4-6	10	NSA5330-8	4
	ASNA2027V4-7	(22)	NSA5359-4-7	6	NSA5330-8	4
	ASNA2027V4-8	(23)	NSA5359-4-8	7	NSA5330-8	4

HOLE NO.	OLD FASTENER	ITEM	NEW FASTENER	ITEM	NUT	ITEM
H2 H3	ASNA2004V4-6 or ASNA2027V4-6	(20)	NSA5359-4-6	10	NSA5330-8	4
		(21)				
	NSA5357-4-6	(25)	ASNA2027V5-6	9	ASNA2529-5	3
	NSA5359-4-6	(26)	ASNA2027V5-6	9	ASNA2529-5	3
	NSA5351V5-6	(24)	NSA5359-5-6	11	NSA5330-10	5
	NSA5357-5-6	(42)	NSA5351V6-6	32	NSA5330-12	31
	NSA5359-5-6	(43)	NSA5351V6-6	32	NSA5330-12	31

NOTE: IF FINDING, INSTALL THE BOLT RELATED TO THE FINAL COLD EXPANDED DIAMETER.

D_SB_536125_5_BCAA_02_01

Figure A-FBCAA - Sheet 02
Cold Expansion of the Holes on FR43 (LH and RH Side)

****CONF ALL**

TABLE FOR THE INSTALLATION OF THE FASTENERS

HOLE NO.	OLD FASTENER	ITEM	NEW FASTENER	ITEM	NUT	ITEM
H4 H5 H6 H7	ASNA2004V4-6 or ASNA2027V4-6	(20) (21)	NSA5359-4-6	10	NSA5330-8	4
	NSA5357-4-6	(25)	ASNA2027V5-6	9	ASNA2529-5	3
	NSA5359-4-6	(26)	ASNA2027V5-6	9	ASNA2529-5	3
H8 H9	ASNA2004V4-7 or ASNA2027V4-7	(13) (22)	NSA5359-4-7	6	NSA5330-8	4
	NSA5357-4-7	(16)	ASNA2027V5-7	1	ASNA2529-5	3
	NSA5359-4-7	(18)	ASNA2027V5-7	1	ASNA2529-5	3

NOTE: IF FINDING, INSTALL THE BOLT RELATED TO THE FINAL COLD EXPANDED DIAMETER.

D_SB_536125_5_BCAA_03_00

Figure A-FBCAA - Sheet 03
Cold Expansion of the Holes on FR43 (LH and RH Side)

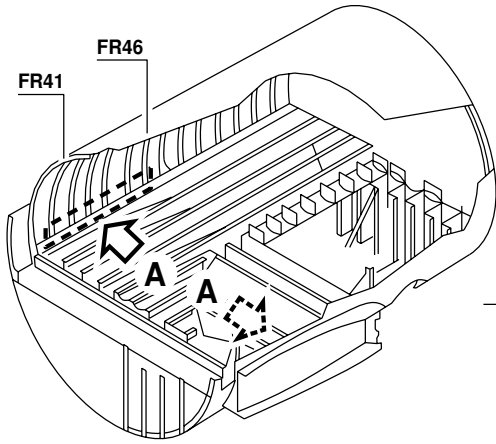
5 DATE: Nov 08/00

SERVICE BULLETIN No.: A300-53-6125

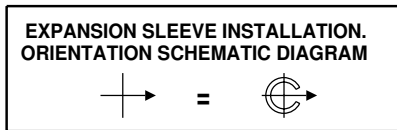
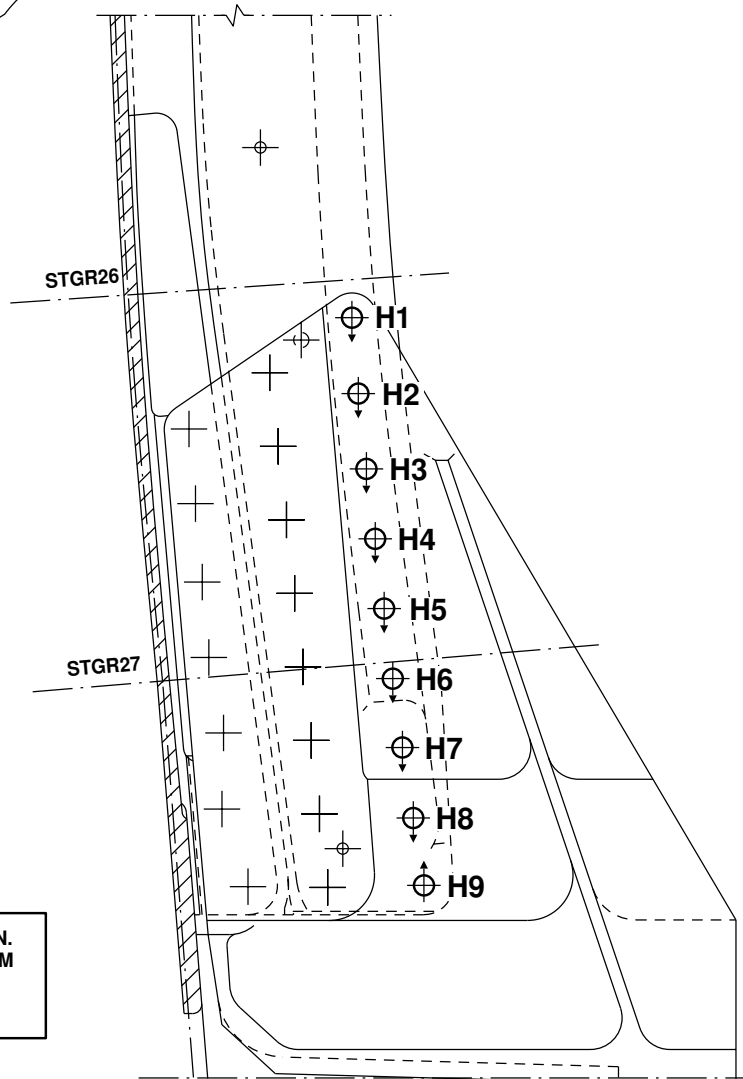
REVISION No.: 04 - Mar 17/15

Page: 53

****CONF ALL**



A
FR44



D_SB_536125_5_BDAA_01_01

Figure A-FBDAA - Sheet 01
Cold Expansion of the Holes on FR44 (LH and RH Side)

****CONF ALL**

TABLE FOR THE INSTALLATION OF THE FASTENERS

HOLE NO.	OLD FASTENER	ITEM	NEW FASTENER	ITEM	NUT	ITEM
H1	ASNA2004V4-8 or ASNA2027V4-8	(14) (23)	NSA5359-4-8	7	NSA5330-8	4
	NSA5357-4-8	(17)	ASNA2027V5-8	2	ASNA2529-5	3
	NSA5359-4-8	(19)	ASNA2027V5-8	2	ASNA2529-5	3
IF A BUSH IS INSTALLED ON THE FRAME						
H1	REFER TO FIGURE A-FCAAA					
IF THE FRAME FOOT IS CUTOUT						
H1	ASNA2027V4-6	(21)	NSA5359-4-6	10	NSA5330-8	4
	ASNA2027V4-7	(22)	NSA5359-4-7	6	NSA5330-8	4
	ASNA2027V4-8	(23)	NSA5359-4-8	7	NSA5330-8	4

HOLE NO.	OLD FASTENER	ITEM	NEW FASTENER	ITEM	NUT	ITEM
H2 H3	ASNA2004V4-8 or ASNA2027V4-8	(14) (23)	NSA5359-4-8	7	NSA5330-8	4
	NSA5357-4-8	(17)	ASNA2027V5-8	2	ASNA2529-5	3
	NSA5359-4-8	(19)	ASNA2027V5-8	2	ASNA2529-5	3
	NSA5351V5-8	(27)	NSA5359-5-8	12	NSA5330-10	5
	NSA5357-5-8	(44)	NSA5351V6-8	33	NSA5330-12	31
	NSA5359-5-8	(45)	NSA5351V6-8	33	NSA5330-12	31

NOTE: IF FINDING, INSTALL THE BOLT RELATED TO THE FINAL COLD EXPANDED DIAMETER.

D_SB_536125_5_BDAA_02_01

Figure A-FBDAA - Sheet 02
Cold Expansion of the Holes on FR44 (LH and RH Side)

****CONF ALL**

TABLE FOR THE INSTALLATION OF THE FASTENERS

HOLE NO.	OLD FASTENER	ITEM	NEW FASTENER	ITEM	NUT	ITEM
H4 H5 H6	ASNA2004V4-8 or ASNA2027V4-8	(14) (23)	NSA5359-4-8	7	NSA5330-8	4
	NSA5357-4-8	(17)	ASNA2027V5-8	2	ASNA2529-5	3
	NSA5359-4-8	(19)	ASNA2027V5-8	2	ASNA2529-5	3
H7 H8 H9	ASNA2004V4-7 or ASNA2027V4-7	(13) (22)	NSA5359-4-7	6	NSA5330-8	4
	NSA5357-4-7	(16)	ASNA2027V5-7	1	ASNA2529-5	3
	NSA5359-4-7	(18)	ASNA2027V5-7	1	ASNA2529-5	3

NOTE: IF FINDING, INSTALL THE BOLT RELATED TO THE FINAL COLD EXPANDED DIAMETER.

D_SB_536125_5_BDAA_03_00

Figure A-FBDAA - Sheet 03
Cold Expansion of the Holes on FR44 (LH and RH Side)

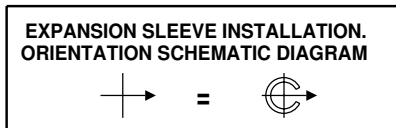
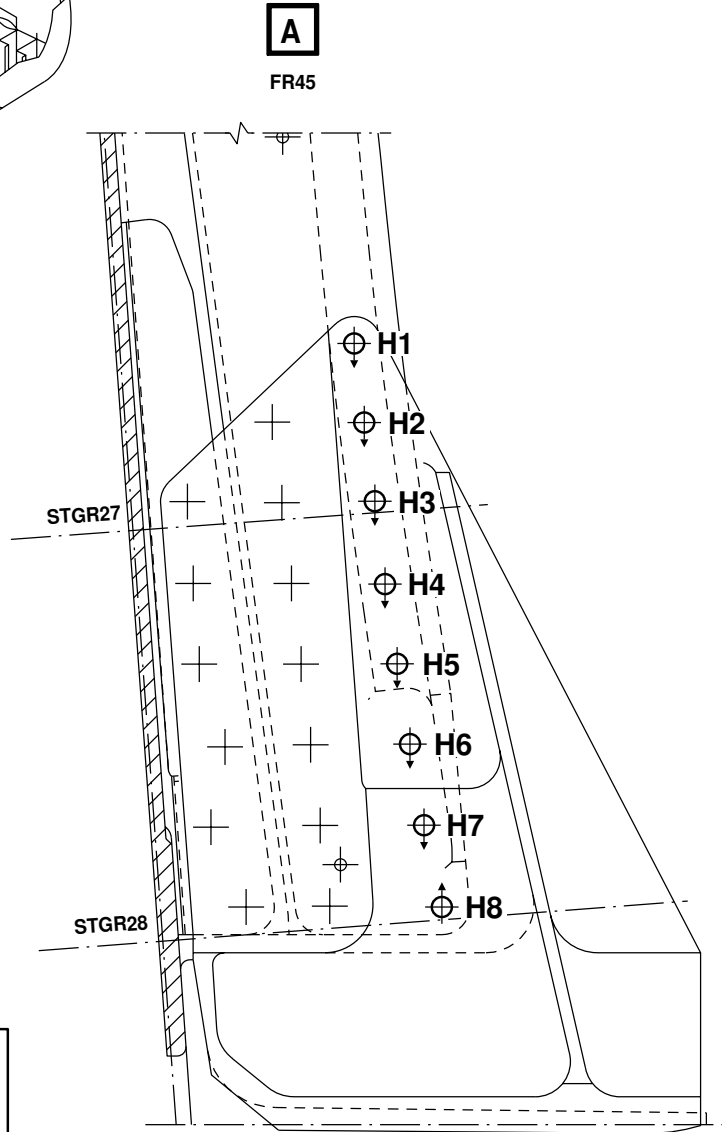
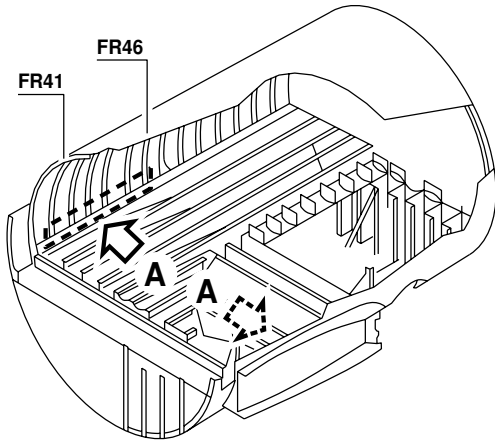
5 DATE: Nov 08/00

SERVICE BULLETIN No.: A300-53-6125

REVISION No.: 04 - Mar 17/15

Page: 56

**CONF ALL



D_SB_536125_5_BEAA_01_00

Figure A-FBEAA - Sheet 01
Cold Expansion of the Holes on FR45 (LH and RH Side)

5 DATE: Nov 08/00

SERVICE BULLETIN No.: A300-53-6125

REVISION No.: 04 - Mar 17/15

Page: 57

****CONF ALL**

TABLE FOR THE INSTALLATION OF THE FASTENERS

HOLE NO.	OLD FASTENER	ITEM	NEW FASTENER	ITEM	NUT	ITEM
H1	ASNA2004V4-7 or ASNA2027V4-7	(13) (22)	NSA5359-4-7	6	NSA5330-8	4
	NSA5357-4-7	(16)	ASNA2027V5-7	1	ASNA2529-5	3
	NSA5359-4-7	(18)	ASNA2027V5-7	1	ASNA2529-5	3
IF A BUSH IS INSTALLED ON THE FRAME						
H1	REFER TO FIGURE A-FCAA					
IF THE FRAME FOOT IS CUTOUT						
H1	ASNA2027V4-6	(21)	NSA5359-4-6	10	NSA5330-8	4
	ASNA2027V4-7	(22)	NSA5359-4-7	6	NSA5330-8	4
	ASNA2027V4-8	(23)	NSA5359-4-8	7	NSA5330-8	4

HOLE NO.	OLD FASTENER	ITEM	NEW FASTENER	ITEM	NUT	ITEM
H2 H3	ASNA2004V4-7 or ASNA2027V4-7	(13) (22)	NSA5359-4-7	6	NSA5330-8	4
	NSA5357-4-7	(16)	ASNA2027V5-7	1	ASNA2529-5	3
	NSA5359-4-7	(18)	ASNA2027V5-7	1	ASNA2529-5	3
	NSA5351V5-7	(15)	NSA5359-5-7	8	NSA5330-10	5
	NSA5357-5-7	(40)	NSA5351V6-7	30	NSA5330-12	31
	NSA5359-5-7	(41)	NSA5351V6-7	30	NSA5330-12	31

NOTE: IF FINDING, INSTALL THE BOLT RELATED TO THE FINAL COLD EXPANDED DIAMETER.

D_SB_536125_5_BEAA_02_01

Figure A-FBEAA - Sheet 02
Cold Expansion of the Holes on FR45 (LH and RH Side)

****CONF ALL**

TABLE FOR THE INSTALLATION OF THE FASTENERS

HOLE NO.	OLD FASTENER	ITEM	NEW FASTENER	ITEM	NUT	ITEM
H4 H5 H6 H7 H8	ASNA2004V4-7 or ASNA2027V4-7	(13)	NSA5359-4-7	6	NSA5330-8	4
		(22)				
	NSA5357-4-7	(16)	ASNA2027V5-7	1	ASNA2529-5	3
	NSA5359-4-7	(18)	ASNA2027V5-7	1	ASNA2529-5	3

NOTE: IF FINDING, INSTALL THE BOLT RELATED TO THE FINAL COLD EXPANDED DIAMETER.

D_SB_536125_5_BEAA_03_00

Figure A-FBEAA - Sheet 03
Cold Expansion of the Holes on FR45 (LH and RH Side)

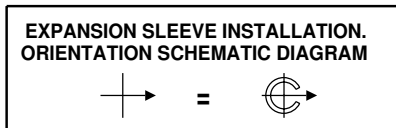
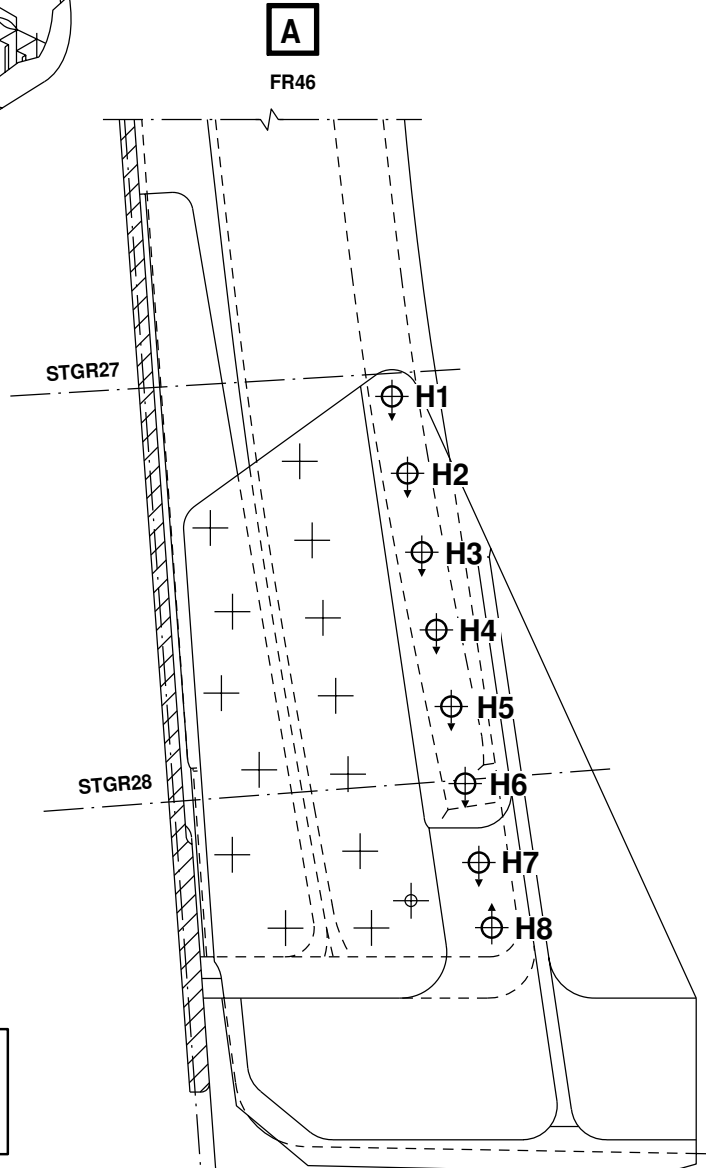
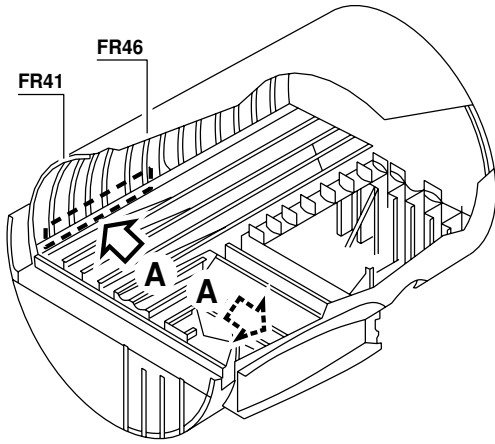
5 DATE: Nov 08/00

SERVICE BULLETIN No.: A300-53-6125

REVISION No.: 04 - Mar 17/15

Page: 59

****CONF ALL**



D_SB_536125_5_BFAA_01_00

Figure A-FBFAA - Sheet 01
Cold Expansion of the Holes on FR46 (LH and RH Side)

5 DATE: Nov 08/00

SERVICE BULLETIN No.: A300-53-6125

REVISION No.: 04 - Mar 17/15

Page: 60

****CONF ALL**

TABLE FOR THE INSTALLATION OF THE FASTENERS

HOLE NO.	OLD FASTENER	ITEM	NEW FASTENER	ITEM	NUT	ITEM
H1	ASNA2004V4-8 or ASNA2027V4-8	(14) (23)	NSA5359-4-8	7	NSA5330-8	4
	NSA5357-4-8	(17)	ASNA2027V5-8	2	ASNA2529-5	3
	NSA5359-4-8	(19)	ASNA2027V5-8	2	ASNA2529-5	3
IF A BUSH IS INSTALLED ON THE FRAME						
H1	REFER TO FIGURE A-FCAAA					
IF THE FRAME FOOT IS CUTOUT						
H1	ASNA2027V4-6	(21)	NSA5359-4-6	10	NSA5330-8	4
	ASNA2027V4-7	(22)	NSA5359-4-7	6	NSA5330-8	4
	ASNA2027V4-8	(23)	NSA5359-4-8	7	NSA5330-8	4

HOLE NO.	OLD FASTENER	ITEM	NEW FASTENER	ITEM	NUT	ITEM
H2 H3	ASNA2004V4-8 or ASNA2027V4-8	(14) (23)	NSA5359-4-8	7	NSA5330-8	4
	NSA5357-4-8	(17)	ASNA2027V5-8	2	ASNA2529-5	3
	NSA5359-4-8	(19)	ASNA2027V5-8	2	ASNA2529-5	3
	NSA5351V5-8	(27)	NSA5359-5-78	12	NSA5330-10	5
	NSA5357-5-8	(44)	NSA5351V6-8	33	NSA5330-12	31
	NSA5359-5-8	(45)	NSA5351V6-8	33	NSA5330-12	31

NOTE: IF FINDING, INSTALL THE BOLT RELATED TO THE FINAL COLD EXPANDED DIAMETER.

D_SB_536125_5_BFAA_02_01

Figure A-FBFAA - Sheet 02
Cold Expansion of the Holes on FR46 (LH and RH Side)

****CONF ALL**

TABLE FOR THE INSTALLATION OF THE FASTENERS

HOLE NO.	OLD FASTENER	ITEM	NEW FASTENER	ITEM	NUT	ITEM
H4 H5 H6	ASNA2004V4-8 or ASNA2027V4-8	(14) (23)	NSA5359-4-8	7	NSA5330-8	4
	NSA5357-4-8	(17)	ASNA2027V5-8	2	ASNA2529-5	3
	NSA5359-4-8	(19)	ASNA2027V5-8	2	ASNA2529-5	3
H7 H8	ASNA2004V4-7 or ASNA2027V4-7	(13) (22)	NSA5359-4-7	6	NSA5330-8	4
	NSA5357-4-7	(16)	ASNA2027V5-7	1	ASNA2529-5	3
	NSA5359-4-7	(18)	ASNA2027V5-7	1	ASNA2529-5	3

NOTE: IF FINDING, INSTALL THE BOLT RELATED TO THE FINAL COLD EXPANDED DIAMETER.

D_SB_536125_5_BFAA_03_00

Figure A-FBFAA - Sheet 03
Cold Expansion of the Holes on FR46 (LH and RH Side)

5 DATE: Nov 08/00

SERVICE BULLETIN No.: A300-53-6125

REVISION No.: 04 - Mar 17/15

Page: 62

****CONF ALL**

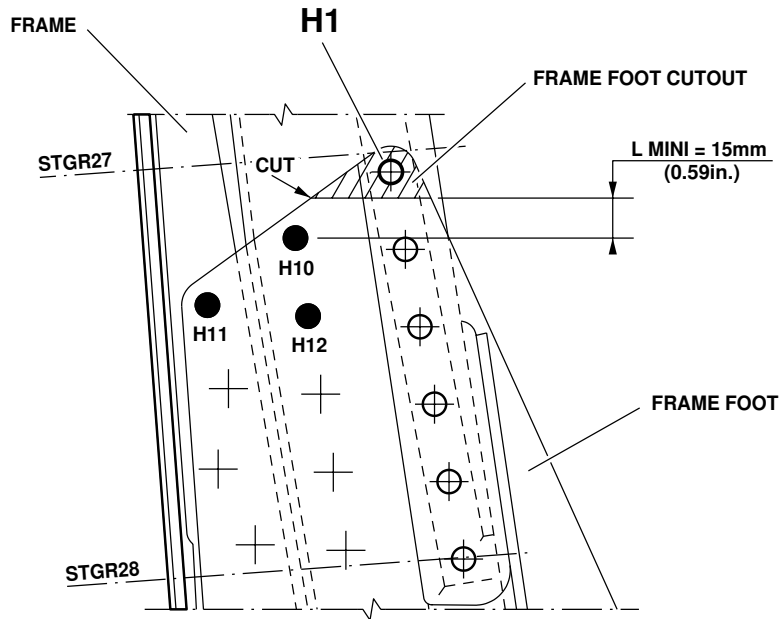
TABLE OF THE EXPANDED HOLES (KIT No. FTI A300-53-6125-1)

HOLE NO.	EXISTING HOLE DIAMETER		STARTING HOLE DIAMETER		STDN	FINAL HOLE DIAMETER	
	MINI.	MAXI.	MINI.	MAXI.		MINI.	MAXI.
H1 H4 H5 H6 H7 H8 H9	6.310mm (0.2484in.)	6.350mm (0.2500in.)	6.400mm (0.2519in.)	6.450mm (0.2539in.)	8-1-N	7.044mm (0.2773in.)	7.078mm (0.2786in.)
	6.706mm (0.2640in.)	6.747mm (0.2656in.)	7.190mm (0.2830in.)	7.260mm (0.2858in.)	8-3-N	7.845mm (0.3068in.)	7.879mm (0.3101in.)
	7.102mm (0.2796in.)	7.141mm (0.2811in.)	7.190mm (0.2830in.)	7.260mm (0.2858in.)	8-3-N	7.845mm (0.3088in.)	7.879mm (0.3101in.)
H2 H3	6.310mm (0.2484in.)	6.350mm (0.2500in.)	6.400mm (0.2519in.)	6.450mm (0.2539in.)	8-1-N	7.044mm (0.2773in.)	7.078mm (0.2786in.)
	6.706mm (0.2640in.)	6.747mm (0.2656in.)	7.190mm (0.2830in.)	7.260mm (0.2858in.)	8-3-N	7.845mm (0.3088in.)	7.879mm (0.3101in.)
	7.102mm (0.2796in.)	7.141mm (0.2811in.)	7.190mm (0.2830in.)	7.260mm (0.2858in.)	8-3-N	7.845mm (0.3088in.)	7.879mm (0.3101in.)
	7.900mm (0.3110in.)	7.940mm (0.3126in.)	7.950mm (0.3130in.)	8.030mm (0.3161in.)	10-1-N	8.637mm (0.34in.)	8.672mm (0.3414in.)
	8.296mm (0.3266in.)	8.335mm (0.3281in.)	8.740mm (0.3441in.)	8.810mm (0.3468in.)	10-3-N	9.437mm (0.3715in.)	9.467mm (0.3727in.)
	8.692mm (0.3422in.)	8.732mm (0.3437in.)	8.740mm (0.3441in.)	8.810mm (0.3468in.)	10-3-N	9.437mm (0.3715in.)	9.467mm (0.3727in.)
IF THE FRAME FOOT IS CUTOUT							
H1	6.310mm (0.2484in.)	6.350mm (0.2500in.)	6.400mm (0.2519in.)	6.450mm (0.2539in.)	8-1-N	7.044mm (0.2773in.)	7.078mm (0.2786in.)

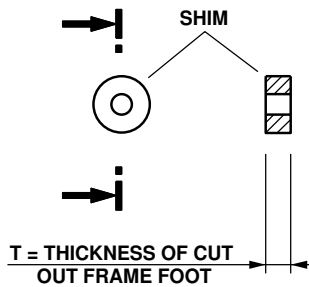
D_SB_536125_5_BGAA_01_00

Figure A-FBGAA - Sheet 01
Table of the Expanded Holes

****CONF ALL**



WARNING:
BE CAREFUL NOT TO
DAMAGE THE STRUCTURE
WHEN YOU DO THE CUT OUT



NOTE:
INSTALL A SHIM OF THE SAME
THICKNESS AS THE CUT OUT PART OF
THE FRAME FOOT BEFORE INSTALLATIONS
OF THE FLOOR FITTING SUPPORT.

D_SB_536125_5_CAAA_01_00

Figure A-FCAAA - Sheet 01
 Repair of the Hole H1 on FR41 thru FR46

**CONF ALL

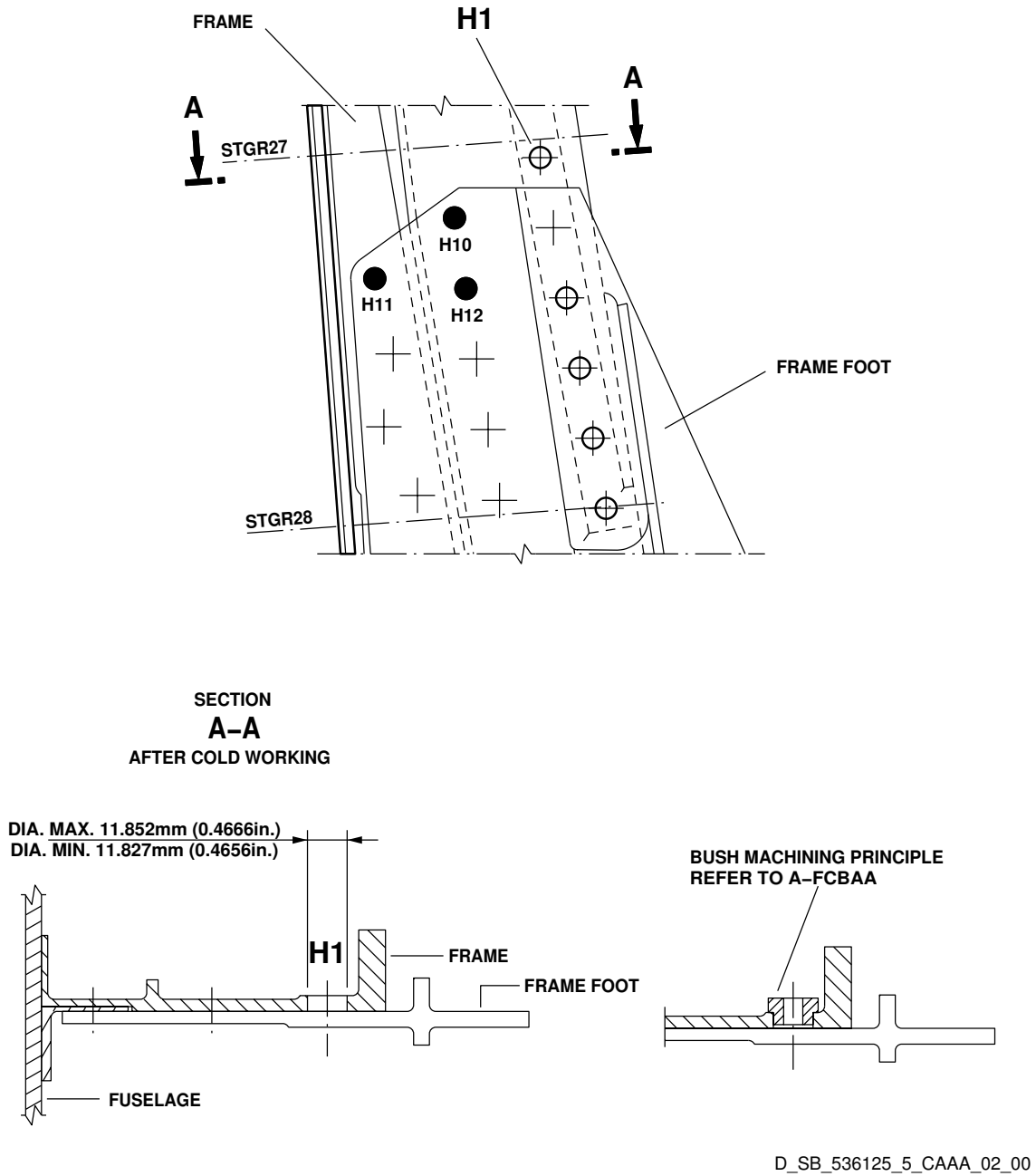


Figure A-FCAAA - Sheet 02
Repair of the Hole H1 on FR41 thru FR46

****CONF ALL**

TABLE OF THE EXPANDED HOLES (KIT No. FTI A300-53-6125-1)

HOLE NO.	EXISTING HOLE DIAMETER		STARTING HOLE DIAMETER		STDN	FINAL HOLE DIAMETER	
	MINI.	MAXI.	MINI.	MAXI.		MINI.	MAXI.
H1	10.920mm (0.4300in.)	11.100mm (0.4370in.)	11.100mm (0.4370in.)	11.180mm (0.4401in.)	14-1-N	11.827mm (0.4656in.)	11.852mm (0.4666in.)
H10 H11 H12	6.310mm (0.2484in.)	6.350mm (0.2500in.)	6.40mm (0.2519in.)	6.45mm (0.2539in.)	8-1-N	7.102mm (0.2796in.)	7.141mm (0.2811in.)

TABLE FOR THE INSTALLATION OF THE FASTENERS

HOLE NO.	OLD FASTENER	ITEM	NEW FASTENER	ITEM	NUT	ITEM
H1	ASNA2004V4-8 OR ASNA2027V4-8	(14) (23)	ASNA2027V4-8	34	ASNA2531-4	40
	ASNA2004V4-10 OR ASNA2027V4-10	(46) (47)	ASNA2027V4-10	35	ASNA2531-4	40
H10 H11 H12	ASNA2004V4-5 OR ASNA2027V4-5	(48) (49)	ASNA5359-4-5	36	NSA5330-8	4
	ASNA2004V4-6 OR ASNA2027V4-6	(20) (21)	ASNA5359-4-6	10	NSA5330-8	4

D_SB_536125_5_CAAA_03_01

Figure A-FCAA - Sheet 03
Repair of the Hole H1 on FR41 thru FR46

5 DATE: Nov 08/00

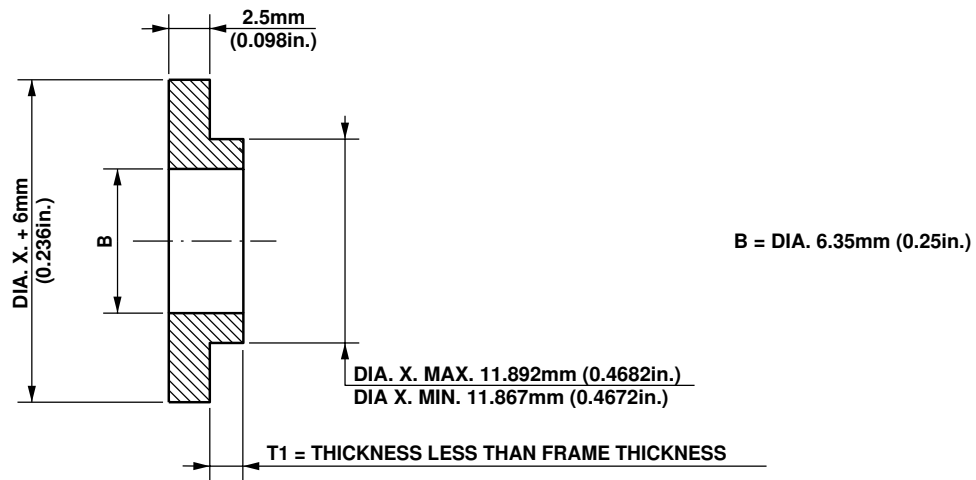
SERVICE BULLETIN No.: A300-53-6125

REVISION No.: 04 - Mar 17/15

Page: 66

****CONF ALL**

BUSH



MATERIAL: STAINLESS STEEL EZ6CNU15-05 (ASNA3295) OR EQUIVALENT 15-5 PH (AMS5659) WITH ADEQUATE PROTECTION (CADMIUM PLATED)

D_SB_536125_5_CBAA_01_02

Figure A-FCBAA - Sheet 01
Principle of Bush Manufacturing

5 DATE: Nov 08/00

SERVICE BULLETIN No.: A300-53-6125

REVISION No.: 04 - Mar 17/15

Page: 67

TITLE: FUSELAGE - CENTER FUSELAGE - REINFORCE UPPER FRAME FEET FITTINGS.

MODIFICATION No.: 12168S21823 12977S22524

Please complete the appropriate item (A or B):A - SB WILL BE embodied YES/NO (if NO please comment)

If YES, aircraft concerned (as per SB effectivity by default) and planned dates (month/year) of embodiment:

B - SB HAS BEEN embodied on aircraft:

Operator comments:

From Airline:

Name/Title:

Signature:

Date:

If operational documentation is affected (see Paragraph 1.K of this SB): If information is needed prior to next normal revision or prior to SB embodiment, please indicate required service(s):

Either: Modification Operational Impact (MOI), if available

YES/NO

Or : Intermediate revision

YES/NO

Important Information: This SB will only be incorporated in your maintenance and operational documentation if this sheet is returned to Airbus and signed by a duly authorised representative. With the next feasible revision, this will result in

- Updating of maintenance documentation to show pre and post SB data.
- Updating of maintenance and operational documentation to show post SB data after embodiment.

If this SB requires previous or simultaneous accomplishment of other SBs, Airbus shall automatically include them in the manual revisions. Refer to SIL 00-037 for detailed information.

Please return this completed sheet to:AIRBUS
CUSTOMER SERVICES DIRECTORATE
1 Rond Point Maurice Bellonte
31707 BLAGNAC CEDEX FRANCE

Attn: SDC32 Technical Data and Documentation Services

FAX: (+33) 5 61 93 28 06

e-mail: sb.reporting@airbus.com

or via your Resident Customer Support Office.

Alternatively, SB lists via letters or fax are also accepted.

SERVICE BULLETIN QUALITY PERCEPTION FORM

Use this form to tell us what is your perception of the quality of this Service Bulletin. The reported data that you provide us will be used to analyse areas of difficulties and to take corrective action to further improve the quality of our Service Bulletins.

We thank you for the time you have taken in completing this form.

(Please rate on a scale of 1 to 4, with 4 being the highest score)

- Quality rating of this SB	4	3	2	1
- Quality rating of the Accomplishment Instructions	4	3	2	1
- Quality rating of the Illustrations	4	3	2	1
- Is this SB easy to understand ?	Y / N			

If you have had difficulties in the accomplishment of this SB please quote below the area(s) and give a short description of the issue.

Planning	Material	Instructions
<input checked="" type="checkbox"/> Effectivity	<input checked="" type="checkbox"/> Kit content	<input checked="" type="checkbox"/> Preparation
<input checked="" type="checkbox"/> Reason	<input checked="" type="checkbox"/> List of Materials Operator Supplied	<input checked="" type="checkbox"/> Mod/Inspection
<input checked="" type="checkbox"/> Manpower	<input checked="" type="checkbox"/> Industry support	<input checked="" type="checkbox"/> Test
<input checked="" type="checkbox"/> References	<input checked="" type="checkbox"/> Re-identification	<input checked="" type="checkbox"/> Close-Up
<input checked="" type="checkbox"/> Publication	<input checked="" type="checkbox"/> Tooling	<input checked="" type="checkbox"/> Illustrations

Comments:

Operator:

Date:

Name/Title:

Please return this form to:

AIRBUS
CUSTOMER SERVICES DIRECTORATE
1 Rond Point Maurice Bellonte
31707 BLAGNAC CEDEX FRANCE

Attn : SEM4 Service Bulletins Management
FAX : (33) 5 61 93 42 51

Or via your Resident Customer Support Office.